

UNITED STATES DISTRICT COURT  
FOR MIDDLE DISTRICT OF LOUISIANA

ATCHAFALAYA BASINKEEPER, LOUISIANA  
CRAWFISH PRODUCERS ASSOCIATION-WEST,  
GULF RESTORATION NETWORK,  
WATERKEEPER ALLIANCE, and SIERRA CLUB  
and its DELTA CHAPTER,

Plaintiff,

v.

U.S. ARMY CORPS OF ENGINEERS

Defendant.

Civ. No. 3:18-cv-00023-SDD-EWD

DECLARATION OF WILLIAM  
CONNER, PH. D IN SUPPORT OF  
PLAINTIFFS' MOTION FOR  
PRELIMINARY INJUNCTION

---

I, WILLIAM CONNER, Ph. D, declare as follows:

I. QUALIFICATIONS

1. I began studying the ecology of swamp forests in 1973 as a Master's student under the direction of Drs. James Gosselink and John Day at Louisiana State University ("LSU") in a project that was part of a large environmental impact statement funded by the Louisiana Offshore Oil Port, Inc. to describe the various wetland habitats a proposed pipeline corridor from the Gulf of Mexico to St. James would cross (Gosselink et al. 1976). Not many people were looking at swamps at that time, but researchers soon began to realize that these forests represent a unique and important ecosystem in the southeastern United States. These swamps were dominated by cypress trees, a species capable of surviving and growing in very wet environments, and thus began my 45-year career to understand the ecology of these forests and how they respond to man-made and natural disturbance.

2. Upon completion of my Master's degree, I was hired by the LSU Center for Wetland Resources to manage the forested wetland program led by Dr. Day. For 15 years, funding was received from Sea Grant and the Savannah River Ecology Laboratory to examine factors related to the growth and vigor of cypress forests in Louisiana and South Carolina (Conner et al. 1981, Conner and Day 1992a&b, Keeland et al. 1997, Megonigal et al. 1997). In the 1980's when Masonite began lumbering cypress on a large scale in the Barataria Basin, I obtained Sea Grant funding to examine the impact logging was having on regeneration in these cut-over areas (Conner 1986, Conner et al. 1986, Conner and Toliver 1987, 1990a&b). At this same time, landowners in the Verret Basin were noticing that their swamplands were starting to deteriorate and asked LSU to investigate the causes. With funding from the Louisiana Board of Regents, a study was initiated to look at cypress swamp and bottomland hardwood forests in the basin to examine the health and vigor of these stands. The cause of the problem was identified as increased water levels in the basin due to subsidence and increased backwater flooding (Conner and Day 1988a&b, 1989, 1991, Conner and Brody 1988, Conner and Flynn 1989, Conner et al. 1993, Conner et al. 2014).

3. In 1982, I began a Ph.D. program in LSU's School of Forestry, Wildlife, and Fisheries looking at "Natural and artificial regeneration of baldcypress in the Barataria and Lake Verret Basins of Louisiana." In addition to the problem of increased flooding, nutria herbivory on young cypress seedlings was found to be a serious threat to regeneration of trees and marsh plants (Conner et al. 1986, Conner and Toliver 1987, Evers et al. 1998). In this study, we found that natural regeneration of cypress forests appears to be inadequate to regenerate existing stands. Others in Florida (Gunderson

1977) and Georgia (Hamilton 1982) also showed that there is very little or no natural regeneration of cypress in swamplands after logging. My Ph.D. dissertation was selected in 1989 as Outstanding Dissertation in the LSU College of Agriculture.

4. In 1990, I accepted an Assistant Professor position at Clemson University's Baruch Institute of Coastal Ecology and Forest Science to lead their Forested Wetland Ecology program. The first opportunity of study was the impact of Hurricane Hugo and the recovery of coastal wetland forests from wind and storm surge impacts (Conner and Askew 1992, 1993a&b, Conner 1994, Conner 1995). This led into a 15-year study examining the impacts of saltwater intrusion (caused by storm surges and rising sea levels) on coastal freshwater swamps in South Carolina, Georgia, and Louisiana funded by the US Fish and Wildlife Service and the USGS Center for Wetlands (Conner et al. 1998, McCarron et al. 1998, Conner and Inabinette 1995, Conner et al. 2007a,b,c, Doyle et al. 2007, Duberstein and Conner 2009, Krauss et al. 2009, Conner et al. 2012, Noe et al. 2013, Pierfelice et al. 2015).

5. I have been recognized nationally and internationally as a leading authority in wetland forest ecology, as evidenced by invited presentations at numerous national and international symposia, including meetings in India, Mexico, Canada, and Australia, as well as an invited lecturer for three weeks at China's Nanjing Forestry University. My research has resulted in me being elected a Fellow by the Society of Wetland Scientists (2007) and Clemson University's Institute of Parks (2010). I also received Clemson University's Godley-Snell Award for Excellence in Agricultural Research (2012) for my work in fresh and saltwater wetlands, wetland management and restoration, and impacts of humans on natural systems. I have extensive experience

studying the forests of southeastern Louisiana, as well as well as other wetland forest ecosystems like them. A copy of my CV is attached as **Exhibit 1** to this Declaration.

6. In preparation for this review I have examined the BBP Army Corps Permit Application July 2016, the USACE Permit (12/14/17), the Department of Environmental Quality Permit (12/12/17), the Office of Coastal Use Permit (4/3/17), the USACE Memorandum for Record (12/14/17), and the USACE Plats. I also participated in a tour of the Atchafalaya Basin and a portion of the proposed pipeline corridor near Bayou Pigeon with representatives of the plaintiffs on January 5<sup>th</sup>, 2018.

## II. WHY THE ATCHAFALAYA BASIN IS SPECIAL

7. The Atchafalaya River Basin contains the largest relatively intact, functioning riparian area in the lower Mississippi Valley and the largest contiguously forested wetlands in North America (Hupp et al. 2008). The Basin covers an area of about 1,401,087 acres, with 271,816 acres being cypress-tupelo (*Taxodium distichum-Nyssa aquatica*) swamps (Piazza 2014). The Basin supports approximately 35% of the forested wetlands remaining in the lower Mississippi River Valley (Doyle et al. 1995, Tockner and Stanford 2002, Chambers et al. 2006). Alluvial systems within the region typically are flooded annually for prolonged periods, and sediment accretion rates on these floodplains may be among the highest in the U.S. (Hupp 2000). The Basin supports a high level of biodiversity (Calhoun 1999), providing habitat to more than 300 wildlife species and more than 100 species of fish and shellfish species (Piazza 2014). In addition, the Basin provides a multitude of ecosystem services like flood control, navigation, forest, fish, and wildlife resources, as well as ecosystem services like carbon sequestration and nutrient reduction for which it is harder to place an economic value on at present.

8. Several large tracts of virgin (i.e., old growth) cypress in southern Louisiana were considered for the establishment of a “Cypress Swamp National Monument” in 1939 (King and Cahalane 1939) including some magnificent stands near Lake Pontchartrain, the lower Pearl River, and in the Morganza and Atchafalaya floodways. Unfortunately, the National Monument proposal ultimately failed and these cypress swamplands were subsequently cut over for lumber.

9. Very few stands of virgin cypress survive today in protected natural areas. Only three reasonably large tracts of uncut virgin cypress are known (Francis Beidler Forest Sanctuary in Four Holes Swamp, South Carolina, the Corkscrew Swamp Sanctuary in southern Florida, and 3000-acre wetland dominated by cypress trees on private property in Arkansas). Some small stands of ancient cypress trees survived on non-commercial forests with trees growing along the Black River in North Carolina and are some of the oldest known living cypress trees existing today (Stahle et al. 2005).

### III. LOGGING IMPACTS OF BAYOU BRIDGE PIPELINE

10. We know that the heaviest logging of cypress swamps in Louisiana began in 1890 with the introduction of the pullboat, and later the overhead-cableway skidder, increasing the range of loggers and the amount of timber that could be brought out of the forest. It ended in 1925 with the depletion of the vast virgin stands of cypress timber and the Great Depression which caused most of the cypress mills to close (Burns 1980). Unfortunately, detailed area, volume, and logging data do not exist from that early logging period (Norgress 1947, Mancil 1972), so it is difficult to know how much cypress swamp existed prior to logging. At the time of European colonization, Louisiana had an estimated 11 to 12 million acres of forested wetlands (Devall 1998) but by 1974, only about 49 percent of the original acreage remained (Turner and Craig 1980).

11. According to the BBP Army Corps Permit Application, the proposed Pipeline Project will cut a 75-foot wide right of way (“ROW”) through the Atchafalaya basin that “temporarily” impacts 124 acres of cypress and/or cypress-tupelo dominated wetlands and results in the permanent conversion of 59 acres of cypress and/or cypress-tupelo dominated wetlands within the Atchafalaya Basin. Supplemental Application, at 19. It is stated that “all forested and scrub-shrub wetlands permanently converted to emergent wetlands will continue to function as wetlands upon completion of the Project; and therefore, there will be no net loss of wetlands as a result of the permanent maintenance of BBP’s easement through wetlands.”

12. On Jan. 5, 2018, I participated in a site visit to view portions of the right of way (“ROW”) for the Bayou Bridge Pipeline. Figure 1 demonstrates where we travelled. During this visit I observed along the proposed pipeline ROW a spoil bank that already blocks north to south overland flow in the area. I also viewed portions of the forest that would be cut to accommodate the 75-foot ROW for the new pipeline, which included some very large and ancient trees.

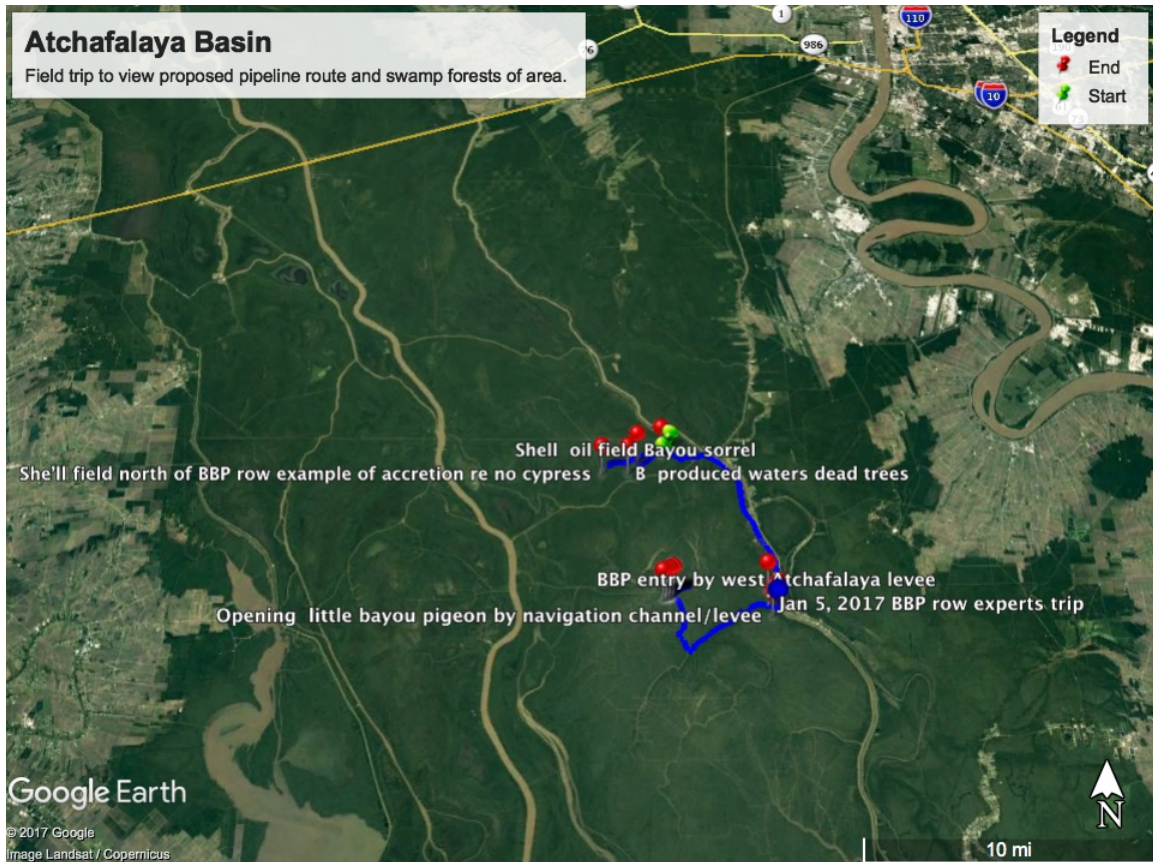


Figure 1. Map showing the route of the January 5, 2018 field trip to the Atchafalaya to view proposed ROW area of pipeline.

13. The majority of the cypress trees growing in the Basin are those that regenerated following the heavy logging between 1890-1925 (Conner and Toliver 1990, Keim et al. 2006, Keim and Amos 2012). This would make them approximately 93 to 125 years old today. However, there are individual trees that were not harvested at that time because of their defects (e.g., broken tops, hollow, deformed shape; Figure 2). These trees are centuries old and scattered throughout the Basin and along the ROW. All trees would be removed along the 75-foot ROW, including some of these ancient trees.

14. The bottomland hardwood and cypress swamps like those in the Atchafalaya Basin are home to many threatened and endangered species (e.g., bald eagles, Louisiana black bear, swallowtail kite, prothonotary warbler, some bat species)



which rely on these unique habitats to survive and reproduce. Anhingas, egrets, and herons are found in plentiful numbers feeding and nesting in and among the cypress trees. River otter and bobcats also live in the Basin. In addition to endangered species and wildlife habitat, these wetland forests provide other critical “ecosystem services” - benefits to human communities that go beyond monetary value, such as pollution control, flood control, and water treatment. They are also significantly better at storing carbon in their large tree trunks and root systems, which helps to offset manmade carbon emissions and mitigate climate change.

15. As noted, the existing forest in the Basin is composed mainly of trees around 100-125 years old, but there exist a number of large, old-growth trees that were not cut in the original logging of the swamp. These older, larger trees have a quantity of dead wood resulting in cavities and standing snags that result in habitat for a great variety of wildlife that takes hundreds, if not thousands, of years to develop. By removing these massive and ancient trees, we lose that critical habitat, and it may never recover because of altered hydrology, increased flooding, and/or herbivory. Most Louisiana black bear tree dens have been documented in cypress trees (Hightower 2002, Benson 2005). According to the U.S. Fish and Wildlife Service, there are only 500 to 750 Louisiana black bears alive today, and the Atchafalaya Basin is one of a handful of places where it can still survive.





Figure 2. Example of old-growth defective cypress tree found along the proposed pipeline ROW, and likely to be removed as part of the project. Cypress trees in the background are trees that regenerated after the 1890-1925 logging period. This tree would not have been logged due to its broken top and hollow trunk. Because of its size, we can estimate that it is probably several centuries old. A true estimate of its age would require tree-ring dating.

IV. “TEMPORARY” IMPACTS AND REGENERATION OF CYPRESS FOREST IN PIPELINE RIGHT-OF-WAY:

16. The Corps’ permit materials observe that the construction will involve clearing a 75-foot ROW through the Basin, and then permanent maintenance of a 30-foot ROW. According to the Corps, the 45-foot margin between the construction ROW and permanent ROW is a “temporary” impact because the forest will be allowed to regenerate

naturally. Based on my experience, I disagree that impacts are temporary and I disagree that the ROW will be able to regenerate in anything approaching its current form—ever. That is because natural regeneration of cypress swamps is currently exceedingly difficult if not impossible due to the altered hydrology of the basin and nutria herbivory problems. Instead, I would expect to see regeneration of shrubby species that do not provide the same functions and values as cypress-tupelo swamp.

17. Factors affecting regeneration include hydrology, herbivory, and sedimentation. Hydrological patterns in the swamps of Louisiana have been altered tremendously. Natural regeneration of cypress was poor to non-existent in south Louisiana swamps following logging operations in the 1980s (Conner et al. 1986a), mainly because the swamps remained flooded for much of the year.

18. The hydrology of the Atchafalaya Basin is greatly altered from natural conditions due to the management of the Mississippi Basin and the use of the Basin for flood control. While the Basin was naturally subject to seasonal flooding pulses from the Atchafalaya River each year, today these pulses are much larger, and last for much longer, than natural due to human intervention. At high discharge stages, the floodplain is inundated to different depths depending on elevation differences within the Basin. Some areas can be flooded up to 10 feet deep (van Beek et al. 1977) and last even into the early summer (personal observation). During these flooding events, which are not consistent with natural hydrologic cycles, bayous and canals convey significant quantities of sediment into the backswamp, resulting in rapid accretion and conversion of cypress-tupelo swamp into bottomland hardwood forests (Hupp et al. 2008, Faulkner et al. 2009).

19. Young seedlings in a wetland environment must grow rapidly to reduce

the risk of canopy submersion by future floods during the growing season (Conner et al. 1986a). Cypress regenerates well in swamps where the seedbed is moist during the time period of seed germination and seedling establishment. Cypress seedlings can withstand complete inundation for up to 45 days (Souther and Shaffer 2000), but long-term flooding above the foliage results in high mortality. Under the current altered hydrologic condition of the Basin, such long-term flooding is commonplace annually—meaning successful germination and establishment of cypress is relatively rare.

20. In addition to logging operations, oil and gas, flood control, navigation, road construction, and agricultural activities also have done much to alter the original overland flow patterns of the swamp. Large areas of swamp forest are now constantly flooded due to spoil banks associated with various activities that have occurred in the swamp (Conner et al. 1981). Flood control levees along the Mississippi and Atchafalaya Rivers prevent the flooding of these wetlands by sediment-laden waters, and new sediments now come from erosion of agricultural fields (Soil Conservation Service 1978) or resuspended bottom sediments (Baumann et al. 1984). These alterations to natural hydrology contribute to the difficulty in regenerating cypress forests.

21. Animal herbivory is a problem that has long existed in Louisiana swamps. The nutria (*Myocastor coypu*) is a native of South America commonly found in low marshy places. Nutrias were first imported and released in Louisiana in 1933, and by 1959, the nutria population in Louisiana was over 20 million animals (Lowery 1974). Nutria were firmly established in the freshwater area between the Atchafalaya River and the Texas state line by 1950 (Atwood 1950). Nutria are known to cause damage to newly planted cypress seedlings. During 1956-57 personnel from the Soil Conservation Service

attempted to plant cypress seedlings in a cut-over swamp area in southcentral Louisiana. After four months, 90% of the seedlings had been destroyed, and nutria were suspected as the cause. The Soil Conservation Service subsequently recommended that the planting of baldcypress be suspended until some means of nutria control were perfected (Blair and Langlinais 1960). Plantings of cypress seedlings in 1991-1996 between Lakes Pontchartrain and Maurepas exhibited nearly 100% mortality if not protected from nutria (Myers et al. 1995). Beaver (*Castor canadensis*) also are detrimental to young cypress seedlings (Conner et al. 2000). Several trees observed on the field tour had been completely to partially girdled by beaver recently. Younger cypress trees are more susceptible to girdling because they have not developed the characteristic deep fluting common to larger cypress trees (Figure 2).

22. Another feature of the Basin that can limit regeneration is the presence of the thick scrub-shrub community that exists over large portions of the Basin (Figure 3). Water-elm (*Planera aquatica*), swamp-privet, and buttonbush (*Cephalanthus occidentalis*) are all extremely flood tolerant (Conner et al. 1981). Buttonbush seeds can even germinate underwater (DuBarry 1963). Another species of concern is Chinese tallow. This nonnative species is already established in the Basin (Piazza 2014). Although it is not tolerant of extended flooding conditions, the seed is viable if sedimentation raises the elevation enough to support less flood tolerant species. Its tolerance of a wide variety of habitat conditions, high seed production, persistent seed bank, and lack of natural pests or pathogens makes it a highly invasive species capable of causing substantial changes to the composition and structure of native plant communities (Bruce et al. 1997, Conner et al. 2002, Keeland and Gorham 2009).



Figure 3. Example of the dense scrub/shrub community growing in many areas of the Atchafalaya Basin.

23. In short, in my opinion, it is highly unlikely that the “temporary” impacts identified by the Corps from construction of the ROW will be temporary, because the natural cypress-tupelo forests that exist on site will not regenerate—either naturally, or with assistance. Instead, I expect that this portion of the ROW will remain open for an extended period and will ultimately fill in with shrubby invasive species like those depicted above or vines like the ladies’ eardrops (*Brunnichia ovata*) observed along the canals traveled during the field tour. Once these get established, they do provide some limited wildlife value as some bird species eat the seeds and the plants provide limited cover. However, they also act as a barrier for regeneration of cypress and tupelo. These tree species like a lot of light to grow and the thick cover of the shrubs and vines limits



their growth if they do have proper conditions to germinate, thus making them more susceptible to death when flooding occurs.

V. MITIGATION FOR LOST CYPRESS TUPELO SWAMPS USING  
BOTTOMLAND HARDWOODS MITIGATION BANKING

24. In addition to the claimed “temporary” impacts from the construction ROW, there will also be permanent impacts from the maintenance of a permanent 30-foot ROW above the pipeline. The Corps appears to minimize the impacts of this permanent loss of forest by characterizing it as simply converting one kind of wetland to another. However, the impacts of maintaining a permanent 30-foot ROW through the swamp are significant because the existing forest is eliminated and prevented from returning, hydrologic patterns are disrupted, and construction and continued maintenance will disrupt soil conditions each time vehicles traverse the ROW due to compaction by heavy equipment, mixing of topsoil and subsoil materials, etc., thereby affecting the ability of the disturbed soils to sustain soil functions like plant growth, water infiltration and retention, support of soil life, etc. The functions associated with forested wetlands would be altered as the area within the maintained ROW would be permanently converted to an herbaceous or open water state.

25. The Corps proposes to “mitigate” the impacts of this permanent loss of forest through mitigation banking. Mitigation banking is defined as the restoration, creation, enhancement, or preservation of a wetland, stream, or habitat conservation area which offsets expected adverse impacts to similar nearby ecosystems. The goal is to replace the exact function and value of the specific wetland habitats that would be adversely affected by a proposed project.

26. I have reviewed the mitigation banking plan proposed for the Atchafalaya Basin by the Corps. I disagree that it mitigates for the impacts of the creation of the permanent ROW and loss of forests. There are two reasons for this.

27. First, as a general matter, it is difficult to create a new wetland just like the old wetland that was removed and altered by heavy machinery. Even in the best of conditions, it takes decades to replace a forest and it can probably never be restored to its original condition. You can't simply go in at the end of the project and smooth out the damage to the surface soils and attempt to restore contours and walk away expecting it to regenerate naturally. It needs to be monitored for years and may require more efforts and management to guide the successional process to get back what was once there. This takes money and time which often is not there. What we have in place is a wetland that has been there for centuries, hosting native creatures and being a stopping point for certain migratory species. By removing that forest, we then would have a new wetland that may, over time, be colonized by the same tree/shrub species that are used by some of the same species that exist there now. In other words, decades of research show that "created" wetlands do not actually replace the lost functions and values of destroyed wetlands. This is well accepted in the scientific literature.

28. The other issue of mitigation banking is the use out-of-kind habitat replacement. Because there is a lack of cypress-tupelo mitigation opportunities in the Basin, the Corps proposes to offset the impacts to the swamp with "out of kind" habitat mitigation, specifically, purchase of credits from a bottomland hardwood area. Along the pipeline ROW, we have a centuries old cypress forest, and it would be "replaced" by a newly restored site that is not even the same kind of forest. Such a site, which is



distant from the ROW, does not have the same kind of hydrology and wetland connection to the rest of the Atchafalaya Basin allowing it to perform the same ecosystem services the old forest does. In my opinion, the proposed mitigation of credits at a bottomlands hardwood forest site does not in any respect “mitigate” the ecological impacts of a permanent 30-foot ROW through the Basin and loss of extensive areas of forest.

## VI. CONCLUSION

29. In sum, my testimony to this Court can be summarized as follows: a) cutting a 75-foot ROW through the Atchafalaya will involve permanent removal of forests and individual ancient trees that provide significant habitat and ecological values; b) none of those impacts will be temporary because the forest will almost certainly not regenerate in its existing form, ever, but will be replaced by either open water or shrubby forest that provides significantly less ecological value; and c) the Corps’ proposal to “mitigate” for a portion of these impacts by requiring purchase of credits from an entirely different kind of forest in a different location does not actually mitigate for any of the harms imposed by this Project.

I declare under penalty of perjury under the laws of the United State of America that the foregoing is true and correct.

Pursuant to 28 U.S.C. § 1746, I declare under penalty of perjury that the foregoing is true and correct to the best of my knowledge. Executed this 26th day of January, 2018, at 3:30 PM, Georgetown, SC.



William Conner, Ph. D

## References Cited

- Atwood, E.L. 1950. Life history studies of nutria, or coypu, in coastal Louisiana. *Journal of Wildlife Management* 14(3):249-265.
- Baumann, R.H., J.W. Day, Jr., and C.A. Miller. 1984. Mississippi deltaic wetland survival: sedimentation versus coastal submergence. *Science* 224:1093-1095.
- Benson, J.F. 2005. Ecology and conservation of Louisiana black bears in the Tensas River basin and reintroduced populations. Thesis, Louisiana State University, Baton Rouge, LA.
- Blair, R.M., and M.J. Langlinais. 1960. Nutria and swamp rabbits damage baldcypress seedlings. *Journal of Forestry* 58:388-389.
- Brown, C.A., and G.N. Montz. 1986. Baldcypress: the tree unique, the wood eternal. Claitor's Publishing Division, Baton Rouge, LA. 139 p.
- Bruce, K.A., G.N. Cameron, P.A. Harcombe, and G. Jubinsky. 1997. Introduction, impact on native habitats, and management of a woody invader, the Chinese tallow tree, *Sapium sebiferum* (L.) Roxb. *Natural Areas Journal* 17:255-260.
- Bull, H. 1949. Cypress planting in southern Louisiana. *Southern Lumberman* 179:229-230.
- Burns, A.C. 1980. Frank B. Williams: cypress lumber king. *Journal of Forest History* 24:127-134.
- Calhoun, A.J.K. 1999. Forested wetlands. Pages 300-331 in M.L. Hunter, ed., *Maintaining biodiversity in forest ecosystems*. Cambridge University Press, Cambridge, UK.
- Chambers, J. L., W. H. Conner, R. F. Keim, S. P. Fauljner, J. W. Day, E. S. Gardiner, M. S. Hughes, S. L. King, K. W. McLeod, C. A. Miller, J. A. Nyman, and G. P. Shaffer. 2006. Towards sustainable management of Louisiana's coastal wetland forest: problems, constraints, and a new beginning. Pages 150-157 in *Proceedings of International Conference on Hydrology and Management of Forested Wetlands*. American Society of Agricultural and Biological Engineers, St. Joseph, MI.
- Conner, W. H. 1986. Comparison of a logged and unlogged forest stand in a Louisiana swamp. *Proceedings of the Louisiana Academy of Science* 49:7-14.
- Conner, W. H. 1994. The effect of salinity and waterlogging on growth and survival of baldcypress and Chinese tallow seedlings. *Journal of Coastal Research* 10(4):1045-1049.

Conner, W. H. 1995. Woody plant regeneration in three South Carolina *Taxodium/Nyssa* stands following Hurricane Hugo. *Ecological Engineering* 4:277-287.

Conner, W. H. and G. R. Askew. 1992. Response of baldcypress and loblolly pine seedlings to short-term saltwater flooding. *Wetlands* 12(3):230-233.

Conner, W. H. and G. R. Askew. 1993a. Impact of saltwater flooding on red maple, redbay, and Chinese tallow seedlings. *Castanea* 58(3):214-219.

Conner, W. H. and G. R. Askew. 1993b. Cypress restoration in salt-killed wetland systems (South Carolina). *Restoration and Management Notes* 11(2):156.

Conner, W. H. and M. Brody. 1989. Rising water levels and the future of southeastern Louisiana swamp forests. *Estuaries* 12(4):318-323.

Conner, W. H. and J. W. Day, Jr. 1988a. The impact of rising water levels on tree growth in Louisiana. Pages 219-224 in D. D. Hook et al., eds. *The ecology and management of wetlands, Vol. 2: Management, use, and value of wetlands*. Croom Helm Ltd Publishers, England.

Conner, W. H. and J. W. Day, Jr. 1988b. Rising water levels in coastal Louisiana: implications for two forested wetland areas in Louisiana. *Journal of Coastal Research* 4:589-596.

Conner, W. H. and J. W. Day, Jr. 1991. Variations in vertical accretion in a Louisiana swamp. *Journal of Coastal Research* 7(3):617-622.

Conner, W. H. and J. W. Day, Jr. 1992a. Diameter growth of *Taxodium distichum* (L.) Rich. and *Nyssa aquatica* L. from 1979-1985 in four Louisiana swamp stands. *American Midland Naturalist* 127(2):290-299.

Conner, W. H. and J. W. Day, Jr. 1992b. Water level variability and litterfall productivity of forested freshwater wetlands in Louisiana. *American Midland Naturalist* 128:237-245.

Conner, W.H. and K. Flynn. 1989. Growth and survival of baldcypress (*Taxodium distichum* (L.) Rich.) planted across a flooding gradient in a Louisiana bottomland forest. *Wetlands* 9(2):207-217.

Conner, W.H. and L.W. Inabinette. 2005. Identification of salt tolerant baldcypress (*Taxodium distichum* (L.) Rich.) for planting in coastal areas. *New Forests* 29:305-312.

Conner, W.H. and J.R. Toliver. 1987. Vexar seedling protectors did not reduce nutria damage to planted baldcypress seedlings. *USDA Tree Planter's Note* 38:26-29.

Conner, W.H. and J.R. Toliver. 1990a. Long-term trends in the baldcypress (*Taxodium distichum* (L.) Rich.) resource in Louisiana. *Forest Ecology and Management* 33/34:543-557.

Conner, W.H. and J.R. Toliver. 1990b. Observations on the regeneration of baldcypress (*Taxodium distichum* (L.) Rich) in Louisiana swamps. *Southern Journal of Applied Forestry* 14:115-118.

Conner, W.H., J.W. Day, Jr., and W.R. Slater. 1993. Bottomland hardwood productivity: case study in a rapidly subsiding, Louisiana, USA, watershed. *Wetland Ecology and Management* 2(4):189-197.

Conner, W.H., J.G. Gosselink, and R.T. Parrondo. 1981. Comparison of the vegetation of three Louisiana swamp sites with different flooding regimes. *American Journal of Botany* 68:320-331.

Conner, W.H., T.W. Doyle, and K.W. Krauss, eds. 2007a. *Ecology of Tidal Freshwater Forested Wetlands of the Southeastern United States*. Springer.

Conner, W. H., L. W. Inabinette, and E. L. Funderburke. 2000. The use of tree shelters in restoring forest species to floodplain delta: 5-year results. *Ecological Engineering* 15(Suppl. 1):S47-S56.

Conner, W.H., K.W. Krauss, and T.W. Doyle. 2007b. Ecology of tidal freshwater forests in coastal deltaic Louisiana and northeastern South Carolina. Chapter 9 In W.H. Conner, T.W. Doyle, and K.W. Krauss (eds.) *Ecology of Tidal Freshwater Forested Wetlands of the Southeastern United States*. Springer.

Conner, W.H., K.W. Krauss, and G.P. Shaffer. 2012. Restoring coastal freshwater forested wetlands following severe hurricanes. Pages 423-442 In J. Stanturf, D. Lamb, and P. Madsen, eds. *A Goal-Oriented Approach to Forest Landscape Restoration*. World Forests 16, DOI 10.1007/978-94-007-5338-9\_16, Springer Science+Business Media, Dordrecht.

Conner, W. H., I. Mihalia, and J. Wolfe. 2002. Tree community structure and changes from 1987-1999 in three Louisiana and three South Carolina forested wetlands. *Wetlands* 22(1): 58-70.

Conner, W.H., K.W. McLeod, and J.K. McCarron. 1998. Survival and growth of four bottomland oak species in response to increased flooding and salinity. *Forest Science* 44(4):618-624.

Conner, W.H., J.R. Toliver, and F.H. Sklar. 1986. Natural regeneration of cypress in a Louisiana swamp. *Forest Ecology and Management* 14:305-317.

- Conner, W.H., J.A. Duberstein, J.W. Day, Jr., and S. Hutchinson. 2014. Impacts of changing hydrology and hurricanes along a flooding/elevation gradient in a south Louisiana forested wetland from 1986-2009. *Wetlands* 34(5):803-814. (DOI) 10.1007/s13157-014-0543-0.
- Conner, W.H., C.T. Hackney, K.W. Krauss, and J.W. Day, Jr. 2007c Tidal freshwater swamps: an overview of future research and an overview of restoration. Chapter 17 In W.H. Conner, T.W. Doyle, and K.W. Krauss (eds.) *Ecology of Tidal Freshwater Forested Wetlands of the Southeastern United States*. Springer.
- Devall, M.S. 1998. An Interim Old-Growth Definition for Cypress-Tupelo Communities in the Southeast. General Technical Report SRS-19. USDA Forest Service, Stoneville, MS.
- Doyle, T.W., B.D. Keeland, L.E. Gorham, and D.J. Johnson. 1995. Structural impact of Hurricane Andrew on the forested wetlands of the Atchafalaya Basin in south Louisiana. *Journal of Coastal Research* 21:354-364.
- Doyle, T.W., W.H. Conner, M. Ratard, and L.W. Inabinette. 2007. Assessing the impact of tidal flooding and salinity on long-term growth of baldcypress under changing climate and riverflow. Chapter 15 In W.H. Conner, T.W. Doyle, and K.W. Krauss (eds.) *Ecology of Tidal Freshwater Forested Wetlands of the Southeastern United States*. Springer.
- Duberstein, J.A. and W.H. Conner. 2009. Use of hummocks and hollows by trees in tidal freshwater forested wetlands along the Savannah River. *Forest Ecology and Management* 258:1613-1618.
- Evers, D.E., C.E. Sasser, J.G. Gosselink, D.A. Fuller, and J.M. Visser. 1998. The impact of vertebrate herbivores on wetland vegetation in Atchafalaya Bay, Louisiana. *Estuaries* 21(1):1-13.
- Faulkner, S.P., P. Bhattaria, Y. Allen, J. Barras, and G. Constant. 2009. Identifying baldcypress-water tupelo regeneration classes in forested wetlands of the Atchafalaya Basin, Louisiana. *Wetlands* 29:809-817.
- Gosselink, J. G., W. H. Conner, and J. A. Monte. 1976. Marsh vegetation in the Barataria watershed and adjacent to Bayou Lafourche. App. VI, Sec. 3, Louisiana Offshore Oil Port. Environmental Baseline Study, LOOP, Inc., New Orleans, LA.
- Gunderson, L.H. 1977. Regeneration of cypress, Taxodium distichum and Taxodium ascendens, in logged and burned cypress strands at Corkscrew Swamp Sanctuary, Florida. M.S. thesis, Univ. Florida, Gainesville, FL.
- Hamilton, D.B. 1982. Plant succession and the influence of disturbance in the Okefenokee Swamp, Georgia. Ph. D. diss., Univ. Ga., Athens.

Hightower, D.A. 2003. Fine-scaled movements and habitat use of black bears in south central Louisiana. MS thesis, Louisiana State University, Baton Rouge.

Hupp, C.R. 2000. Hydrology, geomorphology, and vegetation of Coastal Plain rivers in the southeastern United States. *Hydrological Processes* 14:2991–3010.

Hupp, C.R., C.R. Demas, D.E. Kroes, R.H. Day, and T.W. Doyle. 2008. Recent sedimentation patterns within the central Atchafalaya Basin, Louisiana. *Wetlands* 28:125–140.

Keeland, B.D., and L.E. Gorham. 2009. Delayed tree mortality in the Atchafalaya Basin of southern Louisiana following Hurricane Andrew. *Wetlands* 29:101-111.

Keeland, B. D., W. H. Conner, and R. R. Sharitz. 1997. A comparison of wetland tree growth response to hydrologic regime in Louisiana and South Carolina. *Forest Ecology and Management* 90(2,3):237-250.

Keim, R.F, and J.B. Amos. 2012. Dendrochronological analysis of baldcypress (*Taxodium distichum*) responses to climate and contrasting flood regimes. *Canadian Journal of Forest Research* 42:423-436.

Keim, R.F., J.L. Chambers, M.S. Hughes, L.D. Dimov, W.H. Conner, G.P. Shaffer, E.S. Gardiner, and J.W. Day, Jr. 2006. Long-term success of stump sprouts in high-graded baldcypress–water tupelo swamps in the Mississippi delta. *Forest Ecology and Management* 234:24–33.

King, W., and V.H. Cahalane. 1939. A cypress swamp national monument. Report to the National Park Service, U.S. Department of the Interior, Washington, D.C. 18 p + 8 figures.

Krauss, K.W., J.A. Duberstein, T.W. Doyle, W.H. Conner, R.H. Day, L.W. Inabinette, and J.L. Whitbeck. 2009. Site condition, structure, and growth of baldcypress along tidal/non-tidal salinity gradients. *Wetlands* 29(2):505-519.

Lowery, G.H., Jr. 1974. The mammals of Louisiana and its adjacent waters. La. State Univ. Press, Baton Rouge, LA. 565 p.

McCarron, J. K., K. W. McLeod, and W. H. Conner. 1998. Flood and salinity stress of wetland woody species, buttonbush (*Cephalanthus occidentalis*) and swamp tupelo (*Nyssa sylvatica* var. *biflora*). *Wetlands* 18:165-175.

McLeod, K. W., J. K. McCarron, and W. H. Conner. 1999. Photosynthesis and water relations of four oak species: impact of flooding and salinity. *Trees* 13: 178-187.

Mancil, E. 1969. Some historical and geographical notes on the cypress lumbering industry in Louisiana. *Louisiana Studies* 8:14-25.



- Mancil, E. 1972. A historical geography of industrial cypress lumbering in Louisiana. Ph.D. diss., La. State Univ., Baton Rouge, LA. 278 p.
- Mancil, E. 1980. Pullboat logging. *Journal of Forest History* 24:135-141.
- Mattoon, W.R. 1915. The southern cypress. USDA Agric. Bull. No. 272. 74 p.
- Megonigal, J. P., W. H. Conner, S. Kroeger, and R. R. Sharitz. 1997. Aboveground production in southeastern floodplain forests: a test of the subsidy-stress hypothesis. *Ecology* 78(2):370-384.
- Myers, R.S., G.P. Shaffer, and D.W. Llewellyn. 1995. Baldcypress (*Taxodium distichum* (L.) Rich.) restoration in southeastern Louisiana: relative effects of herbivory, flooding, competition, and macronutrients. *Wetlands* 15:141-148.
- Noe, G.B., K.W. Krauss, B.G. Lockaby, W.H. Conner, C.R. Hupp. 2013. The effect of increasing salinity and forest mortality on soil nitrogen and phosphorus mineralization in tidal freshwater forested wetlands. *Biogeochemistry* 114:225–244.
- Norgress, R.E. 1947. The history of the cypress lumber industry in Louisiana. *Louisiana Historical Quarterly* 30:979-1059.
- Pierfelice, K.N., B.G. Lockaby, K.W. Krauss, W.H. Conner, G.B. Noe, and M.C. Ricker. 2015 Online Release. Salinity influences on above- and belowground net primary productivity in tidal wetlands. *Journal of Hydrologic Engineering* DOI:10.1061/(ASCE)HE.1943-5584.0001223.
- Piazza, B.P. 2014. *The Atchafalaya River Basin: History and Ecology of an American Wetland*. Texas A&M University Press.
- Rathborne, J.C. 1951. Cypress reforestation. *Southern Lumberman* 183:239-240.
- Soil Conservation Service. 1978. Lake Verret watershed, final revised environmental impact statement. USDA, Alexandria, LA. 148 p.
- Souther, R.F. and G.P. Shaffer. 2000. The effects of submergence and light on two age classes of baldcypress (*Taxodium distichum* (L.) Richard) seedlings. *Wetlands* 20(4):697-706.
- Stahle, D.W., R.D. Griffin, M.K. Cleaveland, and F.K. Fye. 2005. Ancient baldcypress forests buried in South Carolina. Preliminary Report from the University of Arkansas Tree-Ring Laboratory. [www.uark.edu/dendro/subfossil.pdf](http://www.uark.edu/dendro/subfossil.pdf).
- Tockner, K., and J.A. Stanford. 2002. Riverine flood plains: present state and future trends. *Environmental Conservation* 29:308-330.



Turner, R.E., and N.J. Craig. 1980. Recent areal changes in Louisiana's forested wetland habitat. *Proceedings of the Louisiana Academy of Science* 43:61-68.

US Fish and Wildlife Service. 1995. Louisiana Black Bear Recovery Plan. Jackson, MS.

van Beek, J.L., W.G. Smith, J.W. Smith, and P. Light. 1977. Plan and concepts for multi-use management of the Atchafalaya Basin. U.S. Environmental Protection Agency, Office of Research and Development. Report EPA-600/3-77-062.

Civ. No. 3:18-CV-00023-SDD-EWD

# **EXHIBIT A**

Civ. No. 3:18-CV-00023-SDD-EWD

**DECLARATION OF WILLIAM CONNER, Ph. D  
IN SUPPORT OF PLAINTIFFS' MOTION FOR PRELIMINARY INJUNCTION**

**WILLIAM H. CONNER**  
**Clemson University**  
**Baruch Institute of Coastal Ecology and Forest Science**  
**Box 596**  
**Georgetown, SC 29442**

## **EDUCATION**

Ph. D. (Forestry), Louisiana State University, May 1988, Title: "Natural and artificial regeneration of baldcypress in the Barataria and Lake Verret Basins of Louisiana"

M.S. -- (Marine Sciences), Louisiana State University, 1975, Title: "Productivity and composition of a freshwater swamp in Louisiana"

B.S. -- (Biology), Virginia Polytechnic Institute and State University, 1973

## **PROFESSIONAL EXPERIENCE**

### **Employment**

Assistant Director, Baruch Institute of Coastal Ecology and Forest Science, 2007-present

Professor, Clemson University, Baruch Institute of Coastal Ecology and Forest Science, 1999 to present

Associate Professor, Clemson University, Baruch Institute of Coastal Ecology and Forest Science, 1994 to 1999

Assistant Professor, Clemson University, Baruch Institute of Coastal Ecology and Forest Science, 1990 to 1994

Assistant Professor - Research, Coastal Ecology Institute, 1989 to 1990

Research Associate, Coastal Ecology Institute, 1975 to 1989

Assistant to the Director, Coastal Ecology Laboratory, Louisiana State University, 1980-1982

## **RESEARCH INTERESTS**

Fresh and Salt Water Forested Wetlands, Wetland Management, Wetland Creation and Restoration, Effects of Man and Nature on Natural Environments, Dendrochronology, Wetlands for Wastewater Treatment, Estuarine/Upland Connections, Changing Land-Use Impacts on Natural Systems, Historical Ecology

## **PROFESSIONAL AND SCIENTIFIC SOCIETIES**

Society of Wetland Scientists

Society for Ecological Restoration

Association of Southeastern Biologists  
Estuarine Research Federation  
Southern Appalachian Botanical Society  
South Carolina Academy of Sciences

## HONORS AND AWARDS

1989. Outstanding Dissertation in College of Agriculture, LSU.

March 2000. The Taking Wing Award: awarded by USDA Forest Service for collaborative research of Iatt Creek Ecosystem.

April 2001. Clemson University Board of Trustees 2000 Award for Faculty Excellence.

June 2007. Selected as Fellow in the Society of Wetland Scientists

May 2010. Godley-Snell Award for Excellence in Agricultural Research

November 2010. LSU School of Renewable Natural Resources Alumnus of the Year.

January 2012. Selected as Fellow of the Clemson University Institute for Parks.

June 2012. Society of Wetland Scientists President's Service Award.

April 2016. Natural Resources Graduate Students Association Teacher of the Year.

## PUBLICATIONS

### **Journals and Books (listed in chronological order)**

Conner, W. H. and J. W. Day, Jr. 1976. Productivity and composition of a baldcypress-water tupelo site and a bottomland hardwood site in a Louisiana swamp. *American Journal of Botany* 63:1354-1364.

Day, J. W., Jr., T. J. Butler, and W. H. Conner. 1977. Productivity and nutrient export studies in a cypress swamp and lake system in Louisiana. Pages 255-269 in M. L. Wiley, ed. *Estuarine Processes*, Vol. II. Academic Press, NY.

Sklar, F. H. and W. H. Conner. 1979. Effects of altered hydrology on primary production and aquatic animal populations in a Louisiana swamp forest. Pages 191-208 in J. W. Day, Jr., D. D. Culley, Jr., R. E. Turner, and A. J. Mumphrey, Jr., eds. *Proc. Third Coastal Marsh and Estuary Management Symposium*. Louisiana State University Division of Continuing Education, Baton Rouge, LA.

Conner, W. H., G. N. Cramer, and J. W. Day, Jr. 1980. Vegetation of the north shore marshes and west shore swamps of Lake Pontchartrain, Louisiana. *Proceedings of the Louisiana Academy of Science* 43:139-145.

Conner, W. H., J. G. Gosselink, and R. T. Parrondo. 1981. Comparison of the vegetation of three Louisiana swamp sites with different flooding regimes. *American Journal of Botany* 68:320-331.

Cramer, G. N., J. W. Day, Jr., and W. H. Conner. 1981. Productivity of four marsh sites surrounding Lake Pontchartrain, Louisiana. *American Midland Naturalist* 106:65-72.

Gosselink, J. G., S. E. Bayley, W. H. Conner, and R. E. Turner. 1981. Ecological factors in the determination of riparian wetland boundaries. Pages 197-219 in J. R. Clark and J. Benforado, eds. *Wetlands of Bottomland Hardwoods*. Elsevier Scientific Publishing Company, Amsterdam, Netherlands.

Gosselink, J. G., W. H. Conner, J. W. Day, Jr., and R. E. Turner. 1981. Classification of wetland resources: land, timber, and ecology. Pages 28-48 in B. D. Jackson and J. L. Chambers, eds. *Timber Harvesting in Wetlands*. Louisiana State University Press, Baton Rouge, LA.

Conner, W. H. and J. W. Day, Jr. 1982. The ecology of forested wetlands in the southeastern United States. Pages 69-87 in B. Gopal, R. E. Turner, R. G. Wetzel, and D. F. Whigham, eds. *Wetlands: Ecology and Management*. International Scientific Publishers, Jaipur, India.

Day, J. W., Jr., C. S. Hopkinson, and W. H. Conner. 1982. An analysis of environmental factors regulating community metabolism and fisheries production in a Louisiana estuary. Pages 120-136 in V. S. Kennedy, ed. *Estuarine Comparisons*. Academic Press, NY.

Day, J. W., Jr., F. H. Sklar, C. S. Hopkinson, G. P. Kemp, and W. H. Conner. 1982. Modeling approaches to understanding and management of freshwater swamp forests in Louisiana (USA). Pages 75-105 in D. O. Logofet and N. K. Lyckyanov, compilers. *Ecosystem dynamics in freshwater wetlands and shallow water bodies*, Vol. 2. Center of International Projects, Moscow, USSR.

Sklar, F. H., R. Costanza, J. W. Day, Jr., and W. H. Conner. 1983. Dynamic simulation of aquatic material flows in an impounded swamp habitat in the Barataria Basin, Louisiana. Pages 741-749 in W. K. Lauenroth, G. V. Skogerboe, and M. Flug, eds. *State-of-the-Art in Ecological Modelling*. Elsevier Scientific Publishing Company, Amsterdam.

Conner, W. H. and C. E. Sasser. 1985. Vegetational composition of the upper Barataria basin swamp, Louisiana. *Northeast Gulf Science* 7(2):163-166.

Kemp, G. P., W. H. Conner, and J. W. Day, Jr. 1985. Effects of flooding on decomposition and nutrient cycling in a Louisiana swamp forest. *Wetlands* 5:35-51.

Conner, W. H. 1986. Comparison of a logged and unlogged forest stand in a Louisiana swamp. *Proceedings of the Louisiana Academy of Science* 49:7-14.

Conner, W. H., C. E. Sasser, and N. Barker. 1986. Floristics of the Barataria Basin

wetlands, Louisiana. *Castanea* 51:111-128.

Conner, W. H., J. R. Toliver, and F. H. Sklar. 1986. Natural regeneration of cypress in a Louisiana swamp. *Forest Ecology and Management* 14:305-317.

Conner, W. H. and J. W. Day, Jr., eds. 1987. The ecology of Barataria Basin, Louisiana: an estuarine profile. U.S. Fish Wildl. Serv. Biol. Rep. 85(7.13). 164 p.

Conner, W. H. and J. R. Toliver. 1987. Vexar seedling protectors did not reduce nutria damage to planted baldcypress seedlings. *USDA Tree Planter's Note* 38:26-29.

Day, J. W., Jr., W. H. Conner, F. Ley-Lou, R. H. Day, and A. M. Navarro. 1987. Productivity and composition of mangrove forests, Laguna de Terminos, Mexico. *Aquatic Botany* 27:267-284.

Conner, W. H. and J. W. Day, Jr. 1988. The impact of rising water levels on tree growth in Louisiana. Pages 219-224 in D. D. Hook et al., eds. *The ecology and management of wetlands, Vol. 2: Management, use, and value of wetlands*. Croom Helm Ltd Publishers, England.

Conner, W. H. and J. W. Day, Jr. 1988. Rising water levels in coastal Louisiana: implications for two forested wetland areas in Louisiana. *Journal of Coastal Research* 4:589-596.

Taylor, N. C., J. W. Day, Jr., G. Neusaenger, and W. H. Conner. 1988. Preliminary water management plan for Jean Lafitte National Park. Pages 234-239 in D. D. Hook et al., eds. *The ecology and management of wetlands, Vol. 2: Management, use, and value of wetlands*. Croom Helm Ltd Publishers, England.

Conner, W. H. 1989. The nutria problem: a reply to a rebuttal. *Aquaphyte* 9(1):14.

Conner, W. H. and M. Brody. 1989. Rising water levels and the future of southeastern Louisiana swamp forests. *Estuaries* 12(4):318-323.

Conner, W. H. and K. Flynn. 1989. Growth and survival of baldcypress (*Taxodium distichum* (L.) Rich.) planted across a flooding gradient in a Louisiana bottomland forest. *Wetlands* 9(2):207-217.

Conner, W. H., J. W. Day, Jr., R. H. Baumann, and J. Randall. 1989. Influence of hurricanes on coastal ecosystems along the northern Gulf of Mexico. *Wetlands Ecology and Management* 1(1):45-56.

Brody, M., W. H. Conner, L. Pearlstine, and W. Kitchens. 1989. Modeling bottomland forest and wildlife habitat changes in Louisiana's Atchafalaya basin. Pages 991-1004 in R. R. Sharitz and J. W. Gibbons, eds. *Freshwater Wetlands and Wildlife Symposium: Perspectives on Natural, Managed and Degraded Ecosystems*. CONF-8603101, DOE Symposium Series No. 61, Office of Scientific and Technical Information, Oak Ridge, TN.

Conner, W. H., R. T. Huffman, and W. Kitchens. 1990. Composition and productivity in

bottomland hardwood forests. Pages 455-479 in J. G. Gosselink, L. C. Lee, and T. A. Muir, eds., *Ecological Processes and Cumulative Impacts: Illustrated by Bottomland Hardwood Wetland Ecosystems*. Lewis Publishers, Inc., Chelsea, MI.

Conner, W. H. and J. R. Toliver. 1990. Observations on the regeneration of baldcypress (*Taxodium distichum* (L.) Rich) in Louisiana swamps. *Southern Journal of Applied Forestry* 14:115-118.

Conner, W. H. and J. R. Toliver. 1990. Long-term trends in the baldcypress (*Taxodium distichum* (L.) Rich.) resource in Louisiana. *Forest Ecology and Management* 33/34:543-557.

Conner, W. H. and J. W. Day, Jr. 1991. Variations in vertical accretion in a Louisiana swamp. *Journal of Coastal Research* 7(3):617-622.

Conner, W. H. and J. W. Day, Jr. 1991. Leaf litter decomposition in three Louisiana freshwater forested wetland areas with different flooding regimes. *Wetlands* 11(2):303-312.

Conner, W. H. and J. W. Day, Jr. 1992. Diameter growth of *Taxodium distichum* (L.) Rich. and *Nyssa aquatica* L. from 1979-1985 in four Louisiana swamp stands. *American Midland Naturalist* 127(2):290-299.

Conner, W. H. and J. W. Day, Jr. 1992. Water level variability and litterfall productivity of forested freshwater wetlands in Louisiana. *American Midland Naturalist* 128:237-245.

Conner, W. H. and G. R. Askew. 1992. Response of baldcypress and loblolly pine seedlings to short-term saltwater flooding. *Wetlands* 12(3):230-233.

Conner, W. H. and G. R. Askew. 1993. Impact of saltwater flooding on red maple, redbay, and Chinese tallow seedlings. *Castanea* 58(3):214-219.

Conner, W. H. and G. R. Askew. 1993. Cypress restoration in salt-killed wetland systems (South Carolina). *Restoration and Management Notes* 11(2):156.

Conner, W. H., J. W. Day, Jr., and W. R. Slater. 1993. Bottomland hardwood productivity: case study in a rapidly subsiding, Louisiana, USA, watershed. *Wetland Ecology and Management* 2(4):189-197.

Conner, W. H., J. R. Toliver, and G. R. Askew. 1993. Artificial regeneration of baldcypress in a Louisiana crayfish pond. *Southern Journal of Applied Forestry* 17(1):54-57.

Day, J. W., Jr., W. H. Conner, R. Costanza, G. P. Kemp, and I. Mendelssohn. 1993. Impacts of sea level rise on coastal systems with special emphasis on the Mississippi River deltaic plain. Pages 276-296 in R. A. Warick, E. M. Barrow, and T. M. L. Wigley, eds. *Climate and Sea Level Change: Observations, Projections and Implications*. Cambridge University Press, NY.

Conner, W. H. 1994. Effect of forest management practices on southern forested wetland



productivity. *Wetlands* 14(1):27-40.

Conner, W. H. 1994. The effect of salinity and waterlogging on growth and survival of baldcypress and Chinese tallow seedlings. *Journal of Coastal Research* 10(4):1045-1049.

Day, J. W., Jr., F. H. Sklar, C. Neill, W. H. Conner, C. S. Hopkins, G. P. Kemp, and R. Costanza. 1994. Modeling of Louisiana swamp forests (USA). Pages 95-128 in B. C. Patten, ed. *Wetlands and Shallow Continental Water Bodies*, Vol. 2. SPB Academic Publishing, The Hague, The Netherlands.

Conner, W. H. 1995. Woody plant regeneration in three South Carolina *Taxodium/Nyssa* stands following Hurricane Hugo. *Ecological Engineering* 4:277-287.

Hesse, I. and W. H. Conner. 1996. Primary productivity of *Sabal minor* L. in a Louisiana forested wetland. *Gulf of Mexico Science* 14(1):7-10.

Day, J. W., Jr., C. Coronado-Molina, F. R. Vera-Herrera, R. Twilley, V. H. Rivera-Monroy, H. Alvarez-Guillen, R. Day, and W. H. Conner. 1996. A 7 year record of above-ground net primary production in a southeastern Mexican mangrove forest. *Aquatic Botany* 55:39-60.

McLeod, K. W., J. K. McCarron, and W. H. Conner. 1996. Effects of flooding and salinity on photosynthesis and water relations of four southeastern coastal plain forest species. *Wetlands Ecology and Management* 4(1):31-42.

Conner, W. H., K. W. McLeod, and J. K. McCarron. 1997. Flooding and salinity effects on growth and survival of four common forested wetland species. *Wetlands Ecology and Management* 5:99-109.

Flynn, K. and W. H. Conner. 1997. Preface. *Wetlands Ecology and Management* 4:219-221.

Flynn, K. and W. H. Conner, eds. 1997. Ecology and Management of Southern Forested Wetlands. *Wetlands Ecology and Management (Special Issue)*, Vol. 4.

Keeland, B. D., W. H. Conner, and R. R. Sharitz. 1997. A comparison of wetland tree growth response to hydrologic regime in Louisiana and South Carolina. *Forest Ecology and Management* 90(2,3):237-250.

Megonigal, J. P., W. H. Conner, S. Kroeger, and R. R. Sharitz. 1997. Aboveground production in southeastern floodplain forests: a test of the subsidy-stress hypothesis. *Ecology* 78(2):370-384.

Nuttle, W. K., M. M. Brinson, D. Cahoon, J. C. Callaway, R. R. Christian, G. L. Chmura, W. H. Conner, R. H. Day, M. Ford, J. Grace, J. C. Lynch, R. A. Orson, R. W. Parkinson, D. Reed, J. M. Rybczyk, T. J. Smith III, R. P. Stumpf, and K. Williams. 1997. Conserving coastal wetlands despite sea level rise. *EOS* 78(25):257, 260-261.

Conner, W. H. 1998. Impact of hurricanes on forests of the Atlantic and Gulf coasts. Pages 271-277 in A.D. Laderman (ed.) *Coastally Restricted Forests*. Oxford University Press, New York, NY.

Conner, W. H. and M. Buford. 1998. Southern deepwater swamps. Chapter 11 in M. G. Messina and W. H. Conner, eds. *Southern Forested Wetlands: Ecology and Management*. Lewis Publishers/CRC Press, Boca Raton, FL.

Conner, W. H. and J. W. Day, Jr. 1998. The effect of sea level rise on coastal wetland forests: the Mississippi Delta as a model. Pages 278-292 in A.D. Laderman (ed.) *Coastally Restricted Forests*. Oxford University Press, New York, NY.

McCarron, J. K., K. W. McLeod, and W. H. Conner. 1998. Flood and salinity stress of wetland woody species, buttonbush (*Cephalanthus occidentalis*) and swamp tupelo (*Nyssa sylvatica* var. *biflora*). *Wetlands* 18:165-175.

Messina, M. G. and W. H. Conner, eds. 1998. *Southern Forested Wetlands: Ecology and Management*. Lewis Publishers/CRC Press, Boca Raton, FL.

Conner, W. H., K. W. McLeod, and J. K. McCarron. 1998. Survival and growth of four bottomland oak species in response to increased flooding and salinity. *Forest Science* 44(4):618-624.

Keeland, B. D. and W. H. Conner. 1999. Regeneration potential of *Taxodium distichum* (L.) Rich. in Lake Chicot, Louisiana, after 44 years of flooding. *Wetlands* 19(1): 149-155.

Cao, F. L. and W. H. Conner. 1999. Selection of flood-tolerant *Populus deltoides* clones for reforestation projects in China. *Forest Ecology and Management* 117:211-220.

Brantley, E. F. and W. H. Conner. 1997. Use of root pruning to facilitate planting of wetland species in a thermally impacted area. *Tree Planters Notes* 48(3&4):76-80 (although it has a 1997 date, it was printed September 1999).

Lockaby, B. G. and W. H. Conner. 1999. N:P balance in wetland forests: productivity across a biogeochemical continuum. *Botanical Review* 65(2): 171-185.

McLeod, K. W., J. K. McCarron, and W. H. Conner. 1999. Photosynthesis and water relations of four oak species: impact of flooding and salinity. *Trees* 13: 178-187.

Burke, M. K., B. G. Lockaby, and W. H. Conner. 1999. Aboveground primary production and nutrient circulation across a flooding gradient in a South Carolina coastal plain forest. *Canadian Journal of Forest Research* 29:1402-1418.

Barton, C., E.A. Nelson, R.K. Kolka, K.W. McLeod, W.H. Conner, M. Lakly, D. Martin, J. Wigginton, C.C. Trettin, and J. Wisniewski. 2000. Restoration of a severely impacted riparian wetland system – the Pen Branch Project. *Ecological Engineering* 15(Suppl. 1):S3-S15.

Conner, W. H., L. W. Inabinette, and E. L. Funderburke. 2000. The use of tree shelters in restoring forest species to floodplain delta: 5-year results. *Ecological Engineering* 15(Suppl. 1):S47-S56.

Zhang, X., S. E. Feagley, J. W. Day, W. H. Conner, I. D. Hesse, J. M. Rybczyk, and W. H. Hudnall. 2000. A water chemistry assessment of wastewater remediation in a natural swamp. *Journal of Environmental Quality* 29(6):1960-1968.

Baker, T. T., III, W. H. Conner, B. G. Lockaby, J. A. Stanturf, and M.K. Burke. 2001. Fine root productivity and dynamics on a forested floodplain in South Carolina. *Soil Science Society of America Journal* 65(2):545-556.

Baker, T. T., III, B. G. Lockaby, W. H. Conner, C. Meir, J. A. Stanturf, and M.K. Burke. 2001. Leaf litter decomposition and nutrient dynamics in four southern forested floodplain communities. *Soil Science Society of America Journal* 65(4): 1334-1347.

Conner, W. H., L. W. Inabinette, C. C. Lucas. 2001. Effects of flooding on early growth and competitive ability of two wetland tree species and Chinese tallow. *Castanea* 66(3): 237-244.

Rybczyk, J. M., J.W. Day and W.H. Conner. 2002. The impact of wastewater effluent on accretion and decomposition in a subsiding forested wetland. *Wetlands* 22(1): 18 -32.

Conner, W. H., T. W. Doyle, and D. Mason. 2002. Water depth tolerances of dominant tree island species: what do we know? Pages 207-223 in A. Van der Valk and F. Sklar, eds. *Tree Islands of South Florida*. Kluwer Academic Publishers, The Netherlands.

Conner, W. H., I. Mihalia, and J. Wolfe. 2002. Tree community structure and changes from 1987-1999 in three Louisiana and three South Carolina forested wetlands. *Wetlands* 22(1): 58-70.

Conner, W.H. and L.W. Inabinette. 2003. Tree growth in three South Carolina (USA) swamps after Hurricane Hugo: 1991-2001. *Forest Ecology and Management* 182: 371-380.

Busbee, W. S., W. H. Conner, D. M. Allen, and J. D. Lanham. 2003. Composition and aboveground productivity of three seasonally flooded isolated forested wetlands in coastal South Carolina, USA. *Southeastern Naturalist* 2(3): 335-346.

Day, J. W., Jae-Young Koa, J. Rybczyk, D. Sabins, R. Bean, G. Berthelot, C. Brantley, L. Cardoch, W. Conner, J. N. Day, A. J. England, S. Feagley, E. Hyfield, R. Lane, J. Lindsey, J. Mistich, E. Reyes, and R. Twilley. 2004. The use of wetlands in the Mississippi Delta for wastewater assimilation: a review. *Ocean & Coastal Management* 47: 671-691.

Stanturf, J. A., W. H. Conner, E. S. Gardiner, C. J. Schweitzer, and A. W. Ezell. 2004. Recognizing and overcoming difficult site conditions for afforestation of bottomland hardwoods. *Ecological Restoration* 22(3): 183-193.

Conner, W.H. (guest editor). 2005. Wetland restoration and management: addressing Asian issues through international collaboration. *Wetlands Ecology and Management* 13(1):1-110.

Conner, W. H. and L. W. Inabinette. 2005. Identification of salt tolerant baldcypress (*Taxodium distichum* (L.) Rich.) for planting in coastal areas. *New Forests* 29:305-312.

Conner, W. H., C. Trettin, and H. Li. 2005. Preface. *Wetlands Ecology and Management* 13:1-3.

Conner, W. H., W. D. Mixon, II, and G. W. Wood. 2005. Maritime forest habitat dynamics on Bulls Island, Cape Romain National Wildlife Refuge, SC, following Hurricane Hugo. *Forest Ecology and Management* 212: 127-134.

Conner, W. H. and R. R. Sharitz. 2005. Forest communities in bottomlands. Pages 93-120 in L. H. Fredrickson, S. L. King, and R. M. Kaminski, editors. *Ecology and Management of Bottomland Hardwood Systems: The State of Our Understanding*. Gaylord Memorial Laboratory Special Publication No. 10. University of Missouri-Columbia: Puxico, MO.

Keim, R.F., J.L. Chambers, M.S. Hughes, L.D. Dimov, W.H. Conner, G.P. Shaffer, E.S. Gardiner, and J.W. Day, Jr. 2006. Long-term success of stump sprouts in high-graded baldcypress-water tupelo swamps in the Mississippi Delta. *Forest Ecology and Management* 234:24-33.

Ozalp, M., W. H. Conner, and B. G. Lockaby. 2007. Above-ground productivity, litter decomposition, and nutrient dynamics of a tidal forested wetland on Bull Island, South Carolina, USA. *Forest Ecology and Management* 245:31-43.

Conner, W.H., T.W. Doyle, and K.W. Krauss, eds. 2007. *Ecology of Tidal Freshwater Forested Wetlands of the Southeastern United States*. Springer.

Conner, W.H., C.T. Hackney, K.W. Krauss, and J.W. Day, Jr. 2007. Tidal freshwater swamps: an overview of future research and an overview of restoration. Chapter 17 In W.H. Conner, T.W. Doyle, and K.W. Krauss (eds.) *Ecology of Tidal Freshwater Forested Wetlands of the Southeastern United States*. Springer.

Conner, W.H., K.W. Krauss, and T.W. Doyle. 2007. Ecology of tidal freshwater forests in coastal deltaic Louisiana and northeastern South Carolina. Chapter 9 In W.H. Conner, T.W. Doyle, and K.W. Krauss (eds.) *Ecology of Tidal Freshwater Forested Wetlands of the Southeastern United States*. Springer.

Doyle, T.W., W.H. Conner, M. Ratard, and L.W. Inabinette. 2007. Assessing the impact of tidal flooding and salinity on long-term growth of baldcypress under changing climate and riverflow. Chapter 15 In W.H. Conner, T.W. Doyle, and K.W. Krauss (eds.) *Ecology of Tidal Freshwater Forested Wetlands of the Southeastern United States*. Springer.

Faulkner S.P., J.L. Chambers, W.H. Conner, R.F. Keim, J.W. Day, E.S. Gardiner, M.S.

Hughes, S.L. King, K.W. McLeod, C.A. Miller, J.A. Nyman, and G.P. Shaffer. 2007. Conservation and Use of Coastal Wetland Forests in Louisiana. Chapter 16 In W.H. Conner, T.W. Doyle, and K.W. Krauss (eds.) Ecology of Tidal Freshwater Forested Wetlands of the Southeastern United States. Springer.

Lockaby, B.G., W.H. Conner, and J. Mitchell. 2008. Floodplains. Pages 1616-1626 In S.E. Jorgensen and B. Fath (eds.) Encyclopedia of Ecology. Elsevier, Oxford.

Krauss, K.W., T.W. Doyle, T.J. Doyle, C.M. Swarzenski, A.S. From, R.H. Day, and W.H. Conner. 2009. Water levels observations in mangrove swamps during two hurricanes in Florida. *Wetlands* 29(1):142-149.

Krauss, K.W., J.A. Duberstein, T.W. Doyle, W.H. Conner, R.H. Day, L.W. Inabinette, and J.L. Whitbeck. 2009. Site condition, structure, and growth of baldcypress along tidal/non-tidal salinity gradients. *Wetlands* 29(2):505-519.

Duberstein, J.A. and W.H. Conner. 2009. Use of hummocks and hollows by trees in tidal freshwater forested wetlands along the Savannah River. *Forest Ecology and Management* 258:1613-1618.

Doyle, T.W., K.W. Krauss, W.H. Conner, and A.S. From. 2010. Predicting the retreat and migration of tidal forests along the northern Gulf of Mexico under sea level rise. *Forest Ecology and Management* 259:770-777.

Keim, R.F., T.J. Dean, J.L. Chambers, and W.H. Conner. 2010. Stand density relationships in baldcypress. *Forest Science* 56(4):336-343.

Conner, W. H., B. Song, T.M. Williams, and J.T. Vernon. 2011. Community structure and aboveground productivity in a longleaf pine-swamp blackgum forest drainage, South Carolina, USA. *Journal of Plant Ecology* 4:67-76.

Conner, W.H., K.W. Krauss, and G.P. Shaffer. 2012. Restoring coastal freshwater forested wetlands following severe hurricanes. Pages 423-442 In J. Stanturf, D. Lamb, and P. Madsen, eds. A Goal-Oriented Approach to Forest Landscape Restoration. *World Forests* 16, DOI 10.1007/978-94-007-5338-9\_16, Springer Science+Business Media, Dordrecht.

Jones, S.G., W.H. Conner, B. Song, D. Gordon, and A. Jayakaran. 2012. Comparing spatio-temporal clusters of arthropod-borne infections using administrative medical claims and state reported surveillance data. *Spatial and Spatio-temporal Epidemiology* 3:205-213.

Jones, S.G., S. Coulter, and W.H. Conner. 2012. Using administrative medical claims data to supplement state disease registry systems for reporting zoonotic infections. *Journal of the American Medical Informatics Association*, DOI:10.1136/amiajnl-2012-000948. Online 18 July 2012.

Jones, S.G., W.H. Conner, and B. Song. 2012. Spatially explicit non-linear models for explaining the occurrence of infectious zoonotic diseases. *ISRN Biomathematics*, vol. 2012, Article ID 132342, 12 pages. doi:10.5402/2012/132342.

Chow, A.T., J. Dai, W.H. Conner, D.R. Hitchcock, and J. Wang. 2013. Dissolved organic matter and nutrient dynamics of a coastal freshwater forested wetland in Winyah Bay, South Carolina. *Biogeochemistry* 112(1):571-587.

Conner, W.H. and J.A. Cherry. 2013. Plant productivity – bottomland hardwood forests. Pages 225-242. In: DeLaune, R.D., K.R. Reddy, C.J. Richardson, and P. Megonigal (eds.), *Methods in Biogeochemistry of Wetlands*. Soil Science Society of America, Inc., Madison, WI.

Cormier, N., K.W. Krauss, and W.H. Conner. 2013. Periodicity in stem growth and litterfall in tidal freshwater forested wetlands: influence of salinity and drought on nitrogen recycling. *Estuaries and Coasts* 36:533–546.

Duberstein, J.A., K.W. Krauss, W.H. Conner, W.C. Bridges, Jr., and V.B. Shelburne. 2013. Do hummocks provide a physiological advantage to even the most flood tolerant of tidal freshwater trees? *Wetlands* 33:399-408.

Noe, G.B., K.W. Krauss, B.G. Lockaby, W.H. Conner, C.R. Hupp. 2013. The effect of increasing salinity and forest mortality on soil nitrogen and phosphorus mineralization in tidal freshwater forested wetlands. *Biogeochemistry* 114:225–244.

Euliss, N.H., Jr., M.M. Brinson, D.M. Mushet, L.M. Smith, W.H. Conner, V.R. Burkett, D.A. Wilcox, M.W. Hester, and H. Zheng. 2013. Ecosystem services: developing sustainable management paradigms based on wetland functions and processes. Pages 181-227. In: Anderson, J.T. and C.A. Davis (eds.), *Wetland Techniques: Volume 3: Applications and Management*. Springer Science+Business Media, Dordrecht.

deGravelles, W.W., S. Hutchinson, and W.H. Conner. 2014. Suppressed baldcypress growth response to artificial canopy gap creation in a North Carolina, USA Swamp. *Wetlands* 34:79–87.

Duberstein, J.A., W.H. Conner, and K.W. Krauss. 2014. Woody vegetation communities of tidal freshwater swamps in South Carolina, Georgia, and Florida (US) with comparisons to similar systems in the US and South America. *Journal of Vegetation Science* 25:848-862.

Conner, W.H., J.A. Duberstein, J.W. Day, Jr., and S. Hutchinson. 2014. Impacts of changing hydrology and hurricanes along a flooding/elevation gradient in a south Louisiana forested wetland from 1986-2009. *Wetlands* 34(5):803-814. (DOI) 10.1007/s13157-014-0543-0.

Conner, W.H., K.W. Krauss, A.H. Baldwin, and S. Hutchinson. 2014. Wetlands: Tidal. Pages 575-588. In: *Encyclopedia of Natural Resources: Land*. Taylor and Francis: NY, Published online: 21 Oct 2014.



Dai, J., J. Wang, A.T. Chow, and W.H. Conner. 2015. Electrical energy production from forest detritus in a forested wetland using microbial fuel cells. *Global Change Biology Bioenergy* 7:244–252.

Krauss, K.W., J.A. Duberstein, and W.H. Conner. 2015. Assessing stand water use in four coastal swamp forests under different settings using sapflow techniques. *Hydrological Processes* 29:112-127.

Ricker, M.C., B.G. Lockaby, G.D. Blosser, and W.H. Conner. 2016. Rapid wood decay and nutrient mineralization in an old-growth bottomland hardwood forest. *Biogeochemistry* 127:323-338 DOI: 10.1007/s10533-016-0183-y.

Stagg, C.L., K.W. Krauss, D.R. Cahoon, N. Cormier, W.H. Conner, and C.W. Swarzenski. 2016. Resilience of coastal wetlands in sea-level rise-induced alternative states. *Ecosystems* 19(8): 1445-1459. DOI: 10.1007/s10021-016-0015-x.

Liu, X., W.H. Conner, B. Song, and A.D. Jayakaran. 2017. Forest composition and growth in a freshwater forested wetland community in response to increased soil salinity in South Carolina, USA. *Forest Ecology and Management* 389:211-219.

Pierfelice, K.N., B.G. Lockaby, K.W. Krauss, W.H. Conner, G.B. Noe, and M.C. Ricker. 2017. Salinity influences on above- and belowground net primary productivity in tidal wetlands. *Journal of Hydrologic Engineering* 22(1):5015002. DOI:10.1061/(ASCE)HE.1943-5584.0001223.

Liu, X., B. Song, J. Xing, A. Ruecker, A.T. Chow, and W.H. Conner. 2017. Effects of salinity and wet–dry treatments on C and N dynamics in coastal forested wetland soils: implications of sea level rise. *Soil Biology and Biogeochemistry* 112:56-67. <https://doi.org/10.1016/j.soilbio.2017.04.002>.

Stagg, C.L., D.R. Schoolmaster, K.W. Krauss, N. Cormier, and W.H. Conner. 2017. Causal mechanisms of soil organic matter decomposition: deconstructing salinity and flooding impacts in coastal wetlands. *Ecology* 98:2003–2018. doi: 10.1002/ecy.1890

Hunter, R.G., J.W. Day, R.R. Lane, G.P. Shaffer, J.N. Day, W.H. Conner, J.M. Rybczyk, J.A. Mistich, and J-Y. Ko. 2018. Using natural wetlands for municipal effluent assimilation: a half-century of experience for the Mississippi River delta and surrounding environs. Chapter 2 in N. Nagabhatla and C.D. Metcalfe, eds. *Multifunctional Wetlands: Pollution Abatement and Other Ecological Services from Natural and Constructed Wetlands*. Springer, Environmental Contamination Remediation and Management Series.

### **Reports and Published Proceedings (listed in chronological order)**

Conner, W. H., R. E. Noble, and J. W. Day, Jr. 1975. Plant species checklist for the Lac des Allemands swamp area in Louisiana. Louisiana State University, LSU Forestry Notes No. 113. 5p.

Gosselink, J. G., W. H. Conner, and J. A. Monte. 1976. Marsh vegetation in the Barataria watershed and adjacent to Bayou Lafourche. App. VI, Sec. 3, Louisiana Offshore Oil Port. Environmental Baseline Study, LOOP, Inc., New Orleans, LA.

Conner, W. H. 1977. Public administration of Louisiana coastal wetlands: 1820-1976. Louisiana State University, Center for Wetland Resources, Baton Rouge, Sea Grant Publ. No. LSU-T-77-01.

Happ, G., V. R. Bennett, W. H. Burke, III, W. H. Conner, N. J. Craig, R. E. Hinchee, J. H. Stone, and L. M. Bahr, Jr. 1977. Impacts of outer continental shelf activities: Lafourche Parish, Louisiana. La. State Univ., Center for Wetland Resources, Baton Rouge. Report to La. State Planning Office, Coastal Resources Program.

Day, J. W., Jr., W. H. Conner, and G. P. Kemp. 1980. Contribution of wooded swamps and bottomland forests to estuarine productivity. Pages 35-50 in P. L. Fore and R. D. Peterson, eds. Proc. of the Gulf of Mexico Coastal Ecosystems Workshop, U.S. Fish and Wildlife Service, Albuquerque, NM. FWS/OBS-80/30.

Craig, N. J., J. W. Day, Jr., and W. H. Conner. 1981. Special management area nomination: Barataria Basin. Louisiana State University, Center for Wetland Resources, Baton Rouge. Final Report to Coastal Resources Program, Louisiana Dept. Natural Resources.

Day, J. W., Jr., W. H. Conner, G. P. Kemp, and D. G. Chambers. 1981. The relationship of estuarine productivity to wooded swamps and bottomland forests in the southeastern U.S. Pages 193-213 in R. C. Carey, P. S. Markovits, and J. B. Kirkwood, eds. Proc. U.S. Fish and Wildlife Service Workshop on Coastal Ecosystems of the Southeastern United States. U.S. Fish and Wildlife Service, Office of Biological Services, Washington, D.C. FWS/OBS-80/59.

Sklar, F. H. and W. H. Conner. 1984. Swamp forest communities and their relation to hydrology: the impact of artificial canals. Pages 245-272 in R. J. Varnell, ed. Water Quality and Wetland Management Conference Proceedings, New Orleans, LA.

Caffrey, J. M., J. W. Day, Jr. and W. H. Conner. 1984. Computer simulation model of a pilot plant to pretreat New Orleans drinking water. Final Report to Louisiana Department of Transportation and Development, Office of Public Works, Baton Rouge.

Conner, W. H. and J. W. Day, Jr. 1984. The impacts of increased flooding on commercial wetland forests in the Lake Verret watershed. Final Report to Louisiana Board of Regents, Research and Development Program, Baton Rouge.

Conner, W. H., J. W. Day, Jr., and W. R. Slater. 1984. The use of wetlands and aquatic plants in treating water: a bibliography. Final Report to Louisiana Department of Transportation and Development, Office of Public Works, Baton Rouge.

Conner, W. H., G. E. Fairers, A. L. Jackson, G. J. McCabe, Jr., J. D. McLaughlin, R. A. Muller, N. L. Tucker, and T. E. Williams. 1984. A climatic perspective of Louisiana floods during 1982-1983. Studies in Geography and Anthropology, Geoscience Publications, Louisiana



State University, Baton Rouge.

Day, J. W., Jr., W. H. Conner, and W. R. Slater. 1984. A study of the effects on the Barataria Unit, Jean Lafitte National Historical Park, of the illegal canals and levees of the Bayou des Familles Corp. within the park protection zone. Final Report to Jean Lafitte National Historical Park, New Orleans.

Pierce, R. S., J. W. Day, Jr., E. Ramcharan, W. H. Conner, R. Boumans, and J. Visser. 1985. A comprehensive wetland management plan for the Labranche wetland, St. Charles Parish, Louisiana. Final Report to St. Charles Parish Department of Planning and Zoning, Hahnville, LA.

Conner, W. H., W. R. Slater, K. McKee, K. Flynn, I. A. Mendelssohn, and J. W. Day, Jr. 1986. Factors controlling the growth and vigor of commercial wetland forests subject to increased flooding in the Lake Verret, Louisiana watershed. Final Report to Board of Regent's Research and Development Program, Baton Rouge, LA.

Boumans, R., J. W. Day, Jr., and W. H. Conner. 1987. Marsh creation using sedimentation fields in St. Charles and Lafourche Parishes, Louisiana. Pages 197-208 in N. V. Brodtmann, Jr., ed. Fourth Water Quality and Wetlands Management Conference, New Orleans, LA.

Conner, W. H. and R. A. Muller. 1987. The relationship between weather and cypress regeneration. Pages 261-271 in G. C. Jacoby, Jr., and J. W. Hornbeck, compilers. Proc. International Symposium on Ecological Aspects of Tree-Ring Analysis, Marymount College, Tarrytown, NY. CONF-8608144.

Day, J. W., Jr., C. J. Madden, W. H. Conner, and R. Costanza. 1987. Management implications of research in the Atchafalaya delta region. Pages 445-467 in N. V. Brodtmann, Jr., ed. Fourth Water Quality and Wetlands Management Conference, New Orleans, LA.

Huffman, R. T., C. Rhodes, W. Kitchens, W. Conner, W. Harms, S. Harrison, P. Hatcher, L. Holloway, R. Johnson, L. Lee, A. Lucas, S. Ray, D. Sanders, R. Theriot, and J. Wooten. 1987. Vegetation workgroup report. Pages 48-63 in J. E. Roelle, G. T. Auble, D. B. Hamilton, R. L. Johnson, and C. A. Segelquist, eds. Results of a workshop concerning ecological zonation in bottomland hardwoods. U.S. Fish Wildl. Serv., National Ecology Center, Ft. Collins, CO. NEC-87/14. 141 pp.

Touchet, B. A., T. Cavinder, W. Conner, B. Ethridge, T. Huffman, E. Miller, R. Novitzki, S. Ray, and D. Hamilton. 1987. Hydrology workgroup report. Pages 6-34 in J. E. Roelle, G. T. Auble, D. B. Hamilton, G. C. Horak, R. L. Johnson, and C. A. Segelquist, eds. Results of a workshop concerning impacts of various activities on the functions of bottomland hardwoods. U.S. Fish Wildl. Serv., National Ecology Center, Ft. Collins, CO. NEC-87/15. 171 pp.

Touchet, B. A., W. Conner, K. Hendricks, J. Kittelson, E. Miller, S. Patterson, S. Ray, and D. Hamilton. 1987. Hydrology workgroup report. Pages 6-35 in J. E. Roelle, G. T. Auble, D. B. Hamilton, R. L. Johnson, and C. A. Segelquist, eds. Results of a workshop concerning assessment of the functions of bottomland hardwoods. U.S. Fish Wildl. Serv., National Ecology

Center, Ft. Collins, CO. NEC-87/16. 173 pp.

Conner, W. H. and J. R. Toliver. 1988. The problem of planting Louisiana swamplands when nutria (*Myocastor coypus*) are present. Pages 42-49 in N. R. Holler, ed. Proc. Third Eastern Wildlife Damage Control Conference. Ala. Coop. Ext. Serv., Auburn Univ.

Day, J. W., Jr. and W. H. Conner, eds. 1988. Physical processes, ecological dynamics, and management implications: results of research in the Atchafalaya Bay delta. Louisiana Sea Grant College Program, La. State Univ., Baton Rouge, La. 233 pp.

Day, J. W., Jr., W. H. Conner, F. Ley-Lou, R. H. Day, and A. M. Navarro. 1988. Productivity and composition of mangrove forests at Boca Chica and Estero Pargo. Pages 237-258 in A. Yanez-Arancibia and J. W. Day, Jr., eds. Ecology of coastal ecosystems in the southern Gulf of Mexico: the Terminos Lagoon region. Inst. Cienc. del Mar y Limnol. UNAM, Coast. Ecol. Inst. LSU. Editorial Universitaria, Mexico D.F.

Conner, W. H., F. X. Flores-Verdugo, J. W. Day, Jr., F. R. Vera-Herrera, and V. Rivera. 1988. Structure and productivity of mangrove forests on the Pacific and Gulf coasts of Mexico. Pages 459-472 in Proc. Symposium on the Ecology and Conservation of Wetlands of the Usumacinta and Grijalva Delta, Villahermosa, Mexico, 2-6 February. INIREB - Division Regional Tabasco.

Conner, W. H. and J. W. Day, Jr. 1989. Response of coastal wetland forests to man-made and natural changes in the environment with emphasis on hydrology. Pages 34-43 in D. D. Hook and R. Lea, eds. Proc. of the Symposium: Forested Wetlands of the Southern United States. Gen. Tech. Rep. SE-50. Asheville, NC: U.S. Dept. Agric., For. Serv., SE For. Expt. Sta.

Conner, W. H. and J. W. Day, Jr. 1989. A use attainability analysis of forested wetlands for receiving treated municipal wastewater: Zapp's Potato Chip Factory and Pierre Part, LA. A Report to the Department of Environmental Quality, Baton Rouge, LA. 9 pp.

Conner, W. H., J. W. Day, Jr., and J. D. Bergeron. 1989. A use attainability analysis of forested wetlands for receiving treated municipal wastewater. A report to the City of Thibodaux, LA. 89 pp.

Conner, W. H. 1990. Forested wetland research at the Louisiana State University Center for Wetland Resources. Pages 73-93 in Best Management Practices for Forest Wetlands: Concerns, Assessment, Regulation and Research, NCASI Technical Bulletin 583.

Day, J. W., Jr. and W. H. Conner. 1990. Water budget analysis. Pages 375-383 in D. Cahoon and C. Groat, eds., A Study of Marsh Management Practice in Coastal Louisiana, Volume III, Ecological Evaluation. Minerals Management Service, New Orleans, LA. OCS Study/MMS 90-0075.

Conner, W. H. 1991. Use of the FORFLO model for predicting the future of forested wetlands in Louisiana and South Carolina. Pages 383-392 in Scientific-Technical Committee Data Inventory Workshop Proceedings, Barataria-Terrebonne National Estuarine Program Publ.

5, Thibodaux, LA.

Conner, W. H. 1993. Invited lecturer in China at Nanjing Forestry University. Three weeks.

Conner, W. H., T. M. Williams, C. A. Gresham, and G. R. Askew. 1993. Wetland forest system recovery from Hurricane Hugo's saltwater tidal surge. Final Rep. to USDA Forest Service, SEFES, Asheville, NC.

Conner, W. H. 1993. Implications of sea level rise on coastal forests of the southern United States. Pages 472-477, Vol. 1, in P. Bruun, ed., Proceedings of the Hilton Head Island South Carolina U.S.A. International Coastal Symposium, Hilton Head, SC, 6-9 June.

Conner, W. H. 1993. Artificial regeneration of baldcypress in three South Carolina forested wetland areas after Hurricane Hugo. Pages 185-188 in J. C. Brissette, ed., Proceedings of the Seventh Biennial Southern Silvicultural Research Conference. USDA Forest Service, Southern Forest Experiment Station, New Orleans, LA. Gen. Tech. Rep. SO-93.

Conner, W. H. 1993. Cypress regeneration in coastal Louisiana and the impact of nutria upon seedling survival. Pages 130-136 in M. C. Landin, ed., Wetlands: Proceedings of the 13th Annual Conference of the Society of Wetland Scientists, New Orleans, LA. South Central Chapter, Society of Wetland Scientists, Utica, MS.

Burke, M. K. and W. H. Conner. 1995. Aboveground productivity values across a flooding gradient in a South Carolina coastal plain forest. Pages 124-126 in M. C. Landin, ed., Proc. National Interagency Workshop on Wetlands: Technology Advances for Wetlands Science, Technical Report, Wetlands Research and Technology Center, US Army Waterways Experiment Station, Vicksburg, MS.

Conner, W. H. 1995. Response of forested wetland species to flooding and increased salinity. Final Rept. to U.S. Fish and Wildlife Service, Lafayette, LA.

Conner, W. H. 1995. Comparison of primary productivity of cypress/tupelo wetlands in South Carolina. Final Rept. to U.S. Forest Service, New Orleans, LA.

Conner, W. H. 1995. Baldcypress seedlings for planting in flooded sites. Pages 430-434 in M. B. Edwards, compiler. Proc. Eighth Biennial Southern Silvicultural Research Conference. USDA Forest Service, Southern Research Station, Asheville, NC. Gen. Tech. Rep. SRS-1.

Conner, W. H., J. M. Bryant, and L. W. Inabinette. 1996. Impact of complete submergence upon three common wetland species. Pages 148-152 in K.M. Flynn, ed. Proceedings Southern Forested Wetlands Ecology and Management Conference, Consortium for Research on Southern Forested Wetlands, Clemson University, Clemson, SC.

Day, J. W., Jr., J. M. Rybczyk, G. Garson, and W. H. Conner. 1997. The development of functionally based ecosystem indices of biotic integrity for southeastern bottomland hardwood forests. Final Report to the Environmental Protection Agency (Contract No. CR823049-01).

Hesse, I. D., W. H. Conner, and J. W. Day, Jr. 1996. Herbivory impacts on the regeneration of forested wetlands. Pages 23-28 in K.M. Flynn, ed. Proceedings Southern Forested Wetlands Ecology and Management Conference, Consortium for Research on Southern Forested Wetlands, Clemson University, Clemson, SC.

Hesse, I. D., W. H. Conner, and J. M. Visser. 1997. Nutria: another threat to Louisiana's vanishing coastal wetlands. *Aquatic Nuisance Species* 2(1):4-5.

Allen, J. A., W. H. Conner, R. A. Goyer, and J. L. Chambers. 1998. Freshwater forested wetlands and global climate change. Pages 33-44 in G. R. Guntenspergen and B. A. Vairin (eds.) Vulnerability of coastal wetlands in the Southeastern United States: climate change research results, 1992-97. U.S. Geological Survey, Biological Resources Division Biological Science Report USGS/BRD/BSR-1998-0002.

Conner, W. H. 1998. Feasibility of using tree rings as an indicator of flooding stress on tree islands in South Florida. Report to South Florida Water Management District, West Palm Beach, FL.

Conner, W. H., R. Todd, and L. W. Inabinette. 1998. Pocatigo Swamp planting demonstration project. Pages 281-283 in T. A. Waldrop, ed. Proceedings of the Ninth Biennial Southern Silvicultural Research Conference. USDA Forest Service Southern Research Station, Asheville, NC. General Technical Report SRS-20.

Kolka, R. K., C. C. Trettin, E. A. Nelson, and W. H. Conner. 1999. Tree seedling establishment across a hydrologic gradient in a bottomland restoration. Pages 89-102 in P. J. Cannizzaro, ed. Proc. 25<sup>th</sup> Annual Conference on Ecosystems Restoration and Creation, Hillsborough Community College, Plant City, FL.

Conner, W. H., K. W. McLeod, L. W. Inabinette, V. H. Parrish, and M. R. Reed. 1999. Successful planting of tree seedlings in wet areas. Pages 201-204 in J.D. Haywood (ed.) Proceedings of the Tenth Biennial Southern Silviculture Research Conference. USDA Forest Service, Southern Research Station, Asheville, NC. General Technical Report SRS-30.

Day, J.W., Jr., J.M. Rybczyk, L. Cardoch, W. Conner, P. Delgado-Sanchez, R Pratt, and A. Westphal. 1999. A review of recent studies of the ecological and economic aspects of the application of secondarily treated municipal effluent to wetlands in Southern Louisiana. In: Rozas, L., J. Nyman, C. Proffitt, N Rabalais, D. Reed, and R Turner (eds.). Recent Research in Coastal Louisiana: Natural System Function and Response to Human Influences. Louisiana Sea Grant College Program, Baton Rouge, LA.

Day, J. W., Jr., L. Cardoch, J. M. Rybczyk, and W. H. Conner. 2000. An ecological and economic overview of wetland wastewater assimilation in coastal Louisiana. Pages 161-170 in J. L. Means and R. E. Hinchee (eds.) Wetlands and Remediation: An International Conference. Battelle Memorial Institute, Columbus, OH.

Baker, T. T. III, B. G. Lockaby, W. H. Conner, J. A. Stanturf, and M. K. Burke. 2000.

Litter decomposition. In Burke, Marianne K.; Eisenbies, Mark H. (eds.) The Coosawhatchie Bottomland ecosystem study: a report on the development of a reference wetland. Gen. Tech. Rep. SRS-38. Asheville, NC: U.S. Department of Agriculture, Forest Service, Southern Research Station: 49-50.

Baker, T. T., III, W. H. Conner, B. G. Lockaby, M. K. Burke, and J. A. Stanturf. 2000. Root growth. In: Burke, Marianne K.; Eisenbies, Mark H. (eds.) The Coosawhatchie Bottomland ecosystem study: a report on the development of a reference wetland. Gen. Tech. Rep. SRS-38. Asheville, NC: U.S. Department of Agriculture, Forest Service, Southern research Station: 42-43.

Conner, W.H., N.L. Hill, E.M. Whitehead, W.S. Busbee, M.A. Ratard, M. Ozalp, D.L. Smith, and J.P. Marshall. 2001. Forested wetlands of the southern United States: a bibliography. Gen. Tech. Rep. SRS-43. Asheville, NC: U.S. Department of Agriculture, Forest Service, Southern Research Station. 133 p.

Conner, W. H. and M. Ozalp. 2002. Baldcypress restoration in a saltwater damaged area of South Carolina. Pages 365-369 in K. W. Outcalt (ed.) Proceedings of the eleventh biennial southern silviculture research conference. Gen. Tech. Rep. SRS-48. Asheville, NC: U.S. Department of Agriculture, Forest Service, Southern Research Station.

Conner, W. H., K. W. McLeod, and E. Colodney. 2002. Restoration methods for deepwater swamps. Pages 39-42 in M.M. Holland, M.L. Warren, and J.A. Stanturf (eds.) Proceedings of a conference on sustainability of wetlands and water resources: how well can riverine wetlands continue to support society into the 21<sup>st</sup> century? Gen. Tech. Rep. SRS-50. Asheville, NC: U.S. Department of Agriculture, Forest Service, Southern Research Station.

Conner, W. H., T. Socha, H. Allen, and G. Hardee. 2002. Using native plant material to stabilize eroded stream banks (South Carolina). *Ecological Restoration* 20(1): 65-66.

Conner, W. H., L. W. Inabinette, and M. Ozalp. 2004. Growth and survival of baldcypress planted in an old ricefield of coastal South Carolina. Pp. 578-580 in K. Connor, ed. Proceedings of 12th Biennial Southern Silviculture Research Conference. Gen. Tech. Rep. SRS-71. Asheville, NC: USDA Forest Service, Southern Research Station.

Hicks, R., W. H. Conner, R C. Kellison, and D. Van Lear. 2004. Silviculture and management strategies applicable to southern hardwoods. Chapter 7 in H. M. Rauscher and K. Johnsen, eds. *Southern Forest Science: Past, Present, Future*. USDA, Forest Service, Gen. Tech. Rep. SRS-75: 51-62.

Stanturf, J. A., E. S. Gardiner, W. H. Conner, K. Outcalt, and J. Guldin. 2004. Restoration of southern forested ecosystems. Chapter 13 in H. M. Rauscher and K. Johnsen, eds. *Southern Forest Science: Past, Present, Future*. USDA, Forest Service, Gen. Tech. Rep. SRS-75:123-131.

Chambers, J.L., W.H. Conner, J.W. Day, S.P. Faulkner, E.S. Gardiner, M.S. Hughes, R.F. Keim, S.L. King, K.W. McLeod, C.A. Miller, J.A. Nyman, and G.P. Shaffer. 2005. Conservation, protection and utilization of Louisiana's Coastal Wetland Forests. Final Report to

the Governor of Louisiana from the Coastal Wetland Forest Conservation and Use Science Working Group. (special contributions from W.M. Aust, R.A. Goyer, G.J. Lenhard, R.F. Souther-Effler, D.A. Rutherford, and W.E. Kelso). 121p. Available from: Louisiana Governor's Office of Coastal Activities, 1051 N. Third St. Capitol Annex Bldg, Suite 138 Baton Rouge, LA 70802.

Conner, W. H. 2005. Restoration of a Saltwater-Killed Freshwater Swamp for Potential Wood Stork Habitat. Final Report to U.S. Fish and Wildlife Service, South Carolina Coastal Ecosystems Program, Charleston, SC.

Chambers, J. L., R. F. Keim, W. H. Conner, J. W. Day, Jr., S. P. Faulkner, E. S. Gardiner M. S. Hughes, S. L. King, K. W. McLeod, C. A. Miller, J. A. Nyman, and G. P. Shaffer. 2005. Pages 117-135 in: T. F. Shupe and M. A. Dunn (eds.) Conservation of Louisiana's coastal wetland forests: Proceedings of Louisiana Natural Resources Symposium. LSU Ag Center, Baton Rouge, LA.

Chambers, J. L., W. H. Conner, R. F. Keim, S. P. Fauljner, J. W. Day, E. S. Gardiner, M. S. Hughes, S. L. King, K. W. McLeod, C. A. Miller, J. A. Nyman, and G. P. Shaffer. 2006. Towards sustainable management of Louisiana's coastal wetland forest: problems, constraints, and a new beginning. Pages 150-157 in Proceedings of International Conference on Hydrology and Management of Forested Wetlands. American Society of Agricultural and Biological Engineers, St. Joseph, MI.

Conner, W. H., R. Franklin, T. Williams, G. Kessler, and A Nygaard. 2006. Bottomland hardwood management demonstrations for South Carolina's Lowcountry Forest Conservation Project. 2006. Pages 432-438 in Proceedings of International Conference on Hydrology and Management of Forested Wetlands. American Society of Agricultural and Biological Engineers, St. Joseph, MI.

Day, J.W., Jr., W.H. Conner, and G.P Shaffer. 2006. The importance of pulsed physical events for Louisiana forested wetlands. Pages 158-166 in Proceedings of International Conference on Hydrology and Management of Forested Wetlands. American Society of Agricultural and Biological Engineers, St. Joseph, MI.

Keim, R.F., J.L. Chambers, M.S. Hughes, J.A. Nyman, C.A. Miller, J.B. Amos, W.H. Conner, J.W. Day, Jr., S.P. Faulkner, E.S. Gardiner, S.L. King, K.W. McLeod, G.P. Shaffer. 2006. Ecological consequences of changing hydrological conditions in wetland forests of coastal Louisiana. Pages 383-396 in Y.J. Xu and V.P. Singh, eds. Coastal Environment and Water Quality. Water Resources Publications, LLC, Highlands Ranch, CO.

Keim, R.F., J.L. Chambers, M.S. Hughes, E.S. Gardiner, W.H. Conner, J.W. Day, Jr., S.P. Faulkner, S.L. King, K.W. McLeod, C.A. Miller, J.A. Nyman, G.P. Shaffer, and L.D. Dimov. 2006. Long-term success of stump sprouts in baldcypress and water tupelo. Pages 559-563 in K. Connor, ed. Proceedings of 13th Biennial Southern Silviculture Research Conference. Gen. Tech. Rep. SRS-92. Asheville, NC: USDA Forest Service, Southern Research Station.

Conner, W.H. and R. Franklin. 2007. Management of Lowcountry bottomland hardwoods



using the crop tree management system. Clemson University Extension. Forestry Leaflet 33.

Conner, W.H. and R. Franklin. 2007. Management of bottomland hardwood forests in South Carolina for wildlife using green tree reservoirs. Clemson University Extension, Forestry Leaflet 34.

Conner, W.H., K. Waldrop, and R. Franklin. 2007. Managing Lowcountry forests for wildlife. Clemson University Extension, Forestry Leaflet 35.

Doyle, T.W., W.H. Conner, R.H. Day, K.W. Krauss, and C.M. Swarzenski. 2007. Wind damage and salinity effects of Hurricanes Katrina and Rita on coastal baldcypress forests of Louisiana. Pages 163-168 in G.S. Farris, G.J. Smith, M.P. Crane, C.R. Demas, L.L. Robbins, and D.L. Lavois, eds. Science and the Storms-The USGS Response to the Hurricanes of 2005: U.S. Geological Survey Circular 1306, Washington, DC.

Faulkner, S. W. Barrow, B. Couvillion, W.H. Conner, L. Randall, and M. Baldwin. 2007. Impacts of Hurricane Katrina on floodplain forests of the Pearl River. Pages 125-130 in G.S. Farris, G.J. Smith, M.P. Crane, C.R. Demas, L.L. Robbins, and D.L. Lavois, eds. Science and the Storms-The USGS Response to the Hurricanes of 2005: U.S. Geological Survey Circular 1306, Washington, DC.

Fabrizio, L.E. and W.H. Conner. 2009. Status and trends of cypress wetland forests in Georgia – options for conservation, restoration, and utilization. In G.D. Carroll, ed. Proceedings of the 2009 Georgia Water Resources Conference, University of Georgia, Athens, GA (CD).

Krauss, K.W., T.W. Doyle, W.H. Conner, and J.A. Duberstein. 2009. Research insight from tidal freshwater forested wetlands. *Wetland Science and Practice* 26(3):18-21.

Davis, S.E., III, K.N. Hines, W.H. Conner, J.J. Cox, D.E. Gawlik, J.A. Jackson, J.O. Jones, F. Miralles-Wilhelm, and J.H. Richards. 2010. Oil and gas impacts in the Big Cypress Ecosystem: an analysis of impacts associated with proposed activities in the Nobles Grade Area. Final Report from The Everglades Foundation, Palmetto Bay, FL.

B. Song, W.-L. Tsai, C.-Y. Chou, T.M. Williams, and W.H. Conner, and B.J. Williams. 2011. Developing digital vegetation of Central Hardwood forest types: a case study from Leslie, Co. Kentucky. Pages 58-66 in S. Fei, J.M. Lhotka, J.W. Stringer, K.W. Gottschalk, and G.W. Miller, eds. Proceedings of the 17th Central Hardwood Forest Conference, Gen. Tech. Rep. NRS-P-78.

Fabrizio, L., W.H. Conner, and W. Sapp. 2012. Status of cypress wetland forests in Georgia: alternatives for conservation and restoration. Southern Environmental Law Center, Atlanta, GA.

Conner, W.H., K.W. Krauss, G.B. Noe, J.A. Duberstein, N. Cormier, and C.L. Stagg. 2016. Biogeochemical and surface elevation controls over tidally influenced freshwater forested wetlands as they transition to marsh. p. 203 (abstract). In: Stringer, C.E., K.W. Krauss, and J.S. Latimer, eds. *Headwaters to Estuaries: Advances in Watershed Science and Management*. e-Gen.



Tech. Rep. SRS-211. Asheville, NC: U.S. Department of Agriculture Forest Service, Southern Research Station.

Jayakaran, A.D., T.M. Williams, and W.H. Conner. 2016. Tracking salinity intrusions in a coastal forested freshwater wetland system. p. 204-206. In: Stringer, C.E., K.W. Krauss, and J.S. Latimer, eds. *Headwaters to Estuaries: Advances in Watershed Science and Management*. e-Gen. Tech. Rep. SRS-211. Asheville, NC: U.S. Department of Agriculture Forest Service, Southern Research Station.

**Presentations Prepared or Helped to Prepare (listed in chronological order, presenter in CAPS)**

Day, J. W., Jr., T. J. BUTLER, and W. H. Conner. 1975. The productivity and nutrient budget of a cypress-tupelo gum swamp in coastal Louisiana. Amer. Soc. Limnol. Oceanogr. Annual Meeting, Halifax, Nova Scotia, June 22-26.

CONNER, W. H. and J. W. Day, Jr. 1976. Effects of annual flooding on swamp productivity. Association of Southeastern Biologists, New Orleans, LA., April 20-22.

CONNER, W. H., R. H. Baumann, and J. G. Gosselink. 1978. Speculations on the long-term impact of impoundments in coastal Louisiana. Gulf Estuarine Research Society Annual Meeting, Dauphin Island, AL, October 12-14.

BAUMANN, R. H., W. H. Conner, J. W. Day, Jr., and L. M. Bahr. 1980. The ecological role of hurricanes in coastal ecosystems. Invited paper at New Orleans International Hurricane Conference, New Orleans, LA, May 26-29.

CONNER, W. H. and J. W. Day, Jr. 1980. The ecology of forested wetlands in the southeastern United States. Invited paper at International Wetlands Conference, Delhi, India, September 10-17.

Conner, W. H., J. G. GOSSELINK, and R. T. Parrondo. 1980. The effect of altered hydrology on vegetative composition and productivity in a Louisiana swamp. AIBS meeting, Tucson, AZ, August 7.

Gosselink, J. G., S. Bayley, W. H. Conner, and R. E. TURNER. 1980. Ecological factors in the determination of riparian wetland boundaries. Invited paper at Bottomland Hardwoods Workshop, National Wetlands Technical Council, Lake Lanier, GA, June 1-4.

GOSSELINK, J. G., W. H. Conner, J. W. Day, Jr., and R. E. Turner. 1981. Classification of wetland resources: land, timber, and ecology. Invited paper at 30th Annual Forestry Symposium, Louisiana State University, Baton Rouge, LA, April 7-8.

DAY, J. W., Jr., F. H. Sklar, G. P. Kemp, C. S. Hopkinson, and W. H. Conner. 1981. Modeling approaches to understanding and management of freshwater swamp forests in Louisiana (USA). Invited paper at SCOPE Symposium on Dynamics of Continual Wetlands and Waterbodies, USSR, July 12-26 (presented by Day).

CONNER, W. H. 1981. Crawfish farm studies conducted by LSU's Coastal Ecology Laboratory in southern Louisiana. Invited paper at 11th Annual Meeting, Louisiana Crawfish Farmers Association, Baton Rouge, LA, September 1.

DAY, J. W., Jr., C. S. Hopkinson, and W. H. Conner. 1981. Ecological function and control in the Barataria basin estuary, Louisiana. Invited paper at Sixth Biennial International Estuarine Research Conference, Gleneden Beach, OR, November 1-5.

BAUMANN, R. H., R. D. DeLaune, and W. H. Conner. 1982. Relationships among vertical accretion, apparent sea level rise and land loss in a Louisiana gulf coast marsh. 78th Annual Association of American Geographers Meeting, San Antonio, TX, April 25-28.

SKLAR, F. H., R. Costanza, J. W. Day, Jr., and W. H. Conner. 1982. Dynamic simulation of aquatic material flows in an impounded swamp habitat in the Barataria basin, Louisiana. Third International Conference on the State-of-the-Art of Ecological Modelling, Fort Collins, CO, May 24-28.

SKLAR, F. H. and W. H. Conner. 1983. Swamp forest communities and their relation to hydrology: the impact of artificial canals. Water Quality and Wetland Management Conference, New Orleans, LA, August 4-5.

DAY, J. W., Jr., F. H. Sklar, C. Neill, W. H. Conner, C. S. Hopkinson, G. P. Kemp, and R. Costanza. 1983. The role of modeling in studies of freshwater swamp forests in Louisiana (USA). SCOPE International Conference on Freshwater Wetlands and Shallow Water Bodies, Tallinn, USSR, August 3-13.

CONNER, W. H. 1984. Use of aerial imagery in studying Louisiana's swamp forests. Invited seminar in Forestry 7071 "Practical Applications of Remote Sensing in Forestry," Department of Forestry, LSU, February 21.

DAY, J. W., Jr., W. H. Conner, and W. R. Slater. 1984. Allogenic succession in a Louisiana swamp. American Society of Limnology and Oceanography, Vancouver, B.C., June 11-14.

CONNER, W. H. 1984. Growth and survival of cypress seedlings in a crawfish pond. Invited presentation to the Forestry Management Chief's Tour, Henderson, LA, September 20.

BECKER, R. E., W. H. Conner, J. W. Day, Jr., W. Herke, and R. E. Turner. 1985. The role of science in management of Louisiana's coastal impoundment systems. Invites paper at Estuarine Research Federation meeting, Durham, NH, July 29-August 2.

CONNER, W. H., G. P. Kemp, and J. W. Day, Jr. 1985. Effects of flooding on decomposition and nutrient cycling in a Louisiana swamp forest. Society of Wetland Scientists, Durham, NH, July 29-August 2.

PEARLSTINE, L., W. H. Conner, and W. Kitchens. 1985. Modeling the impacts of

subsidence and artificial levee construction on bottomland forest communities in the Lake Verret basin, Louisiana. International Society for Ecological Modeling, Gainesville, FL, August 12-15.

PIERCE, R. S., W. H. Conner, J. W. Day, Jr., E. Ramcharan, R. Boumans, and J. Visser. 1985. A comprehensive wetland management plan for the LaBranche wetlands, Louisiana. Gulf Estuarine Research Society section, Estuarine Research Federation meeting, Durham, NH, July 29-August 2.

SLATER, W. R., W. H. Conner, and J. W. Day, Jr. 1985. Water level changes and bottomland hardwood growth in the Lake Verret basin, Louisiana. Gulf Estuarine Research Society section, Estuarine Research Federation meeting, Durham, NH, July 29-August 2.

CONNER, W. H. 1985. Impacts of rising water levels on Louisiana wetland forests. Invited seminar, Savannah River Ecology Laboratory, Aiken, SC, October 21-23.

CONNER, W. H. and J. W. Day, Jr. 1986. The impact of rising water levels on tree growth in Louisiana. International Symposium on Wetland Ecology and Management, Charleston, SC, June 16-20.

CONNER, W. H. and R. A. Muller. 1986. The relationship between weather and cypress regeneration. Invited paper to International Symposium on Ecological Aspects of Tree-Ring Analysis, Palisades, NY, August 17-21.

PEARLSTINE, L., M. Brody, W. H. Conner, and W. Kitchens. 1986. Modelling subsidence and levee construction impacts on bottomland forest communities in Louisiana's Atchafalaya Basin. Freshwater Wetlands and Wildlife Symposium: Perspectives on Natural, Managed and Degraded Ecosystems, Charleston, SC, March 24-27.

TAYLOR, N., J. W. Day, Jr. Nuesanger, and W. H. Conner. 1986. A preliminary plan for water management in the Jean Lafitte National Park, Louisiana. International Symposium on Wetland Ecology and Management, Charleston, SC, June 16-20.

CONNER, W. H. and J. W. Day, Jr. 1986. Response of bottomland hardwood forests to water level increases in the Mississippi deltaic plain. Tenth International Conference of the Coastal Society, New Orleans, LA, 12-15 October.

BRODY, M., L. Pearlstine, and W. H. Conner. 1986. Modeling bottomland forest and wildlife habitat changes in Louisiana's Atchafalaya Basin. Third Water Quality and Wetland Management Conference, New Orleans, LA, 2-3 October.

TEAGUE, K. G., R. H. Day, J. W. Day, Jr., and W. H. Conner. 1986. Marsh management in Louisiana: present status and potential conflicts. Gulf Estuarine Research Society Fall Meeting, Baton Rouge, LA, 30-31 October.

CONNER, W. H., F. X. Flores-Verdugo, J. W. Day, Jr., F. R. Vera-Herrera, and V. Rivera. 1987. The productivity of mangrove forests, Laguna de Terminos, Mexico. Invited paper at Symposium on the Ecology and Conservation of Wetlands of the Usumacinta and Grijalva

Delta, Villahermosa, Mexico, 2-6 February.

DAY, J. W., Jr., C. J. Madden, W. H. Conner, and R. Costanza. 1987. Management implications of research in the Atchafalaya delta region. Fourth Water Quality and Wetlands Management Conference, New Orleans, LA, 24-25 September.

DAY, J. W., Jr., W. H. Conner, R. Costanza, G. P. Kemp, and I. A. Mendelsohn. 1987. Impacts of sea level rise on coastal ecosystems. Invited paper at International Symposium on the Effects of Climatic Change on Sea Level, Severe Tropical Storms, and Their Associated Impacts, Norwick, United Kingdom, 1-4 September.

BOUMANS, R., J. W. Day, Jr., and W. H. Conner. 1987. Marsh restoration using sedimentation fields in St. Charles and Lafourche Parishes, Louisiana. Fourth Water Quality and Wetlands Management Conference, New Orleans, LA, 24-25 September.

CONNER, W. H. and J. R. Toliver. 1987. The problem of planting Louisiana swamplands when nutria (*Myocastor coypus*) are present. Invited paper at Third Eastern Wildlife Damage Control Conference, Gulf Shores, AL, 18-21 October.

CONNER, W. H. and M. Brody. 1987. The impact of rising water levels on the swamp forests of southeastern Louisiana. Estuarine Research Federation Meeting, New Orleans, LA, 25-25 October.

CONNER, W. H. 1988. Impacts of rising water levels on Louisiana swamps. Invited Spring Series Seminar, Department of Biological Sciences, Southeastern Louisiana University. 16 March.

CONNER, W. H., M. Brody, and J. W. Day, Jr. 1988. The impact of rising water levels on productivity and succession in Louisiana's coastal wetland forests. Association of Southeastern Biologists 49th Annual Meeting, Biloxi, MS, 8-11 April.

KROEGER, S., W. H. Conner, P. Megonigal, R. Sharitz, and J. W. Day, Jr. 1988. A regional comparison of forest vegetation along topographic gradients. Association of Southeastern Biologists 49th Annual Meeting, Biloxi, MS, 8-11 April.

MEGONIGAL, P., W. H. Conner, S. Kroeger, R. Sharitz, and J. W. Day, Jr. 1988. A regional comparison of primary production in forested wetlands across topographic and flooding gradients. Association of Southeastern Biologists 49th Annual Meeting, Biloxi, MS, 8-11 April.

CONNER, W. H. and J. W. Day, Jr. 1988. Response of coastal wetland forests to man-made and natural changes in the environment. Invited paper at Symposium on Forested Wetlands of the Southern United States, Orlando, FL, 12-15 July.

CONNER, W. H. and J. W. Day, Jr. 1988. Response of a temperate floodplain forest in Louisiana to rising water levels. 3rd International Wetlands Conference, Rennes, France, 19-23 September.

CONNER, W. H. and J. R. Toliver. 1988. Long-term trends in the baldcypress (*Taxodium distichum* (L.) Rich.) resource in Louisiana. Invited paper at International Forested Wetlands Resource: Identification and Inventory, Baton Rouge, LA, 18-22 September.

DAY, J. W., Jr., R. Boumans, and W. H. Conner. 1988. The creation of marshes in a rapidly subsiding environment: project design and preliminary results. 3rd International Wetlands Conference, Rennes, France, 19-23 September.

Gosselink, J. G., G. P. Shaffer, S. Hamilton, R. Boumans, D. Burdick, D. CHILDERS, W. H. Conner, D. Cushman, S. Fields, M. Koch, N. Taylor, J. Visser, and J. Scurry. 1988. Cumulative impact assessment in bottomlands of the Tensas Basin, Louisiana. Landscape Ecology Symposium, Albuquerque, NM.

CHILDERS, D., N. Taylor, W. H. Conner, R. Boumans, M. Koch, J. G. Gosselink, and F. Flores. 1988. Cumulative impact assessment in bottomlands of the Tensas Basin, Louisiana: Hydrologic and water quality changes related to forest clearing. Landscape Ecology Symposium, Albuquerque, NM.

DAY, R. H., W. H. Conner, J. W. Day, Jr., and F. Vera-Herrera. 1989. Growth rates of three mangroves in a riverine forest and a fringe forest bordering Laguna de Terminos, Campeche, Mexico. Estuarine Research Federation Biennial Meeting, Baltimore, MD, 8-12 October.

CONNER, W. H. 1989. Forested Wetland Research at the Louisiana State University Center for Wetland Resources. Invited presentation at the Southern Regional Meeting of the National Council of the Paper Industry for Air and Stream Improvement, Inc. Asheville, NC, 12-14 June.

CONNER, W. H. 1989. Baldcypress: the resource eternal? Department of Forestry, Clemson University, SC, 1-3 October.

CONNER, W. H. 1989. Cypress regeneration in Louisiana: success and problems. Baruch Forest Science Institute, Georgetown, SC, 4-5 October.

Day, J. W., Jr. and W. H. CONNER. 1989. Management implications of research in the Atchafalaya Delta region. Invited poster at Louisiana's Environment in the 1990's Symposium, Baton Rouge, LA, 14-16 November.

Wilson, R., R. Boumans, W. H. CONNER, and J. W. Day, Jr. 1989. Use of sediment fences for marsh creation in St. Charles Parish. Invited poster at Louisiana's Environment in the 1990's Symposium, Baton Rouge, LA, 14-16 November.

CONNER, W. H., J. W. Day, Jr., I. D. Hesse, S. E. Feagley, and J. Rybczyk. 1991. The use of forested wetlands for improving water quality in Louisiana - the Thibodaux experience. Wetland Biogeochemistry Symposium, Baton Rouge, LA, 11-13 February.

HESSE, I. D., S. E. Feagley, W. H. Conner, and J. W. Day, Jr. 1991. Baseline

characterization and nutrient cycling in a receiving basin for waste water. Wetland Biogeochemistry Symposium, Baton Rouge, LA, 11-13 February.

CONNER, W. H., J. W. Day, Jr., I. D. Hesse, S. E. Feagley, R. Hartman, and J. Rybczyk. 1991. Ecological characterization of a Louisiana swamp forest before wastewater application. Association of Southeastern Biologists, Boone, NC, 10-13 April.

CONNER, W. H. 1991. Restoration of a hurricane-damaged cypress forest in South Carolina, USA. Invited paper at Coastal Forests and Forested Wetlands, Yale University, New Haven, CT, 18-20 April.

CONNER, W. H. 1991. Response of wetland forests on Hobcaw Barony to Hurricane Hugo's storm surge. Society of Wetland Scientists, Ann Arbor, MI, 28-31 May.

CONNER, W. H. 1991. Wetlands management and managing old growth. Managing Forest Structure and Composition Short Course, Litchfield Beach, SC, 7 October.

CONNER, W. H. 1991. Spatial characteristics of forested wetlands and using the FORFLO model to predict changes. 2nd Annual USC Landscape Ecology Modeling Workshop, Georgetown, SC, 8 October.

CONNER, W. H. 1991. Use of the FORFLO model for predicting the future of forested wetlands in Louisiana and South Carolina. Invited paper at Barataria-Terrebonne National Estuarine Project Data Inventory Workshop, Thibodaux, LA, 29-30 October.

CONNER, W. H., P. Megonigal, S. Kroeger, and R. R. Sharitz. 1992. Comparison of structure, litterfall, and tree growth across a flooding gradient in a Gulf and Atlantic coast floodplain forest. Poster at Seventh Annual U.S. Landscape Ecology Symposium, Corvallis, OR, 8-11 April.

CONNER, W. H. 1992. Cypress regeneration in coastal Louisiana and the impact of nutria upon seedling survival. Society of Wetland Scientists, New Orleans, LA, 31 May-June 5.

CONNER, W. H. 1992. Effect of forest management practices on southern forested wetland productivity: natural versus managed sites. Society of Wetland Scientists, New Orleans, LA, 31 May-5 June.

CONNER, W. H. and T. H. Williams. 1992. Recovery of a South Carolina forested wetland damaged by a saltwater storm surge. INTECOL's IV International Wetlands Conference, Columbus, OH, 13-17 September.

CONNER, W. H. 1992. Wetlands ecosystems management. Managing Forest Structure and Composition Short Course, Litchfield Beach, SC, 28 September.

CONNER, W. H. 1992. Artificial regeneration of baldcypress in three South Carolina forested wetland areas after Hurricane Hugo. Seventh Biennial Southern Silvicultural Research Conference, Mobile, AL, 17-19 November.



CONNER, W. H. 1992. Forested wetlands - ecology, value, and management. Stewardship Cross-Training Workshop, Florence and Orangeburg, SC, 8-10 December.

HESSE, I. D. and W. H. Conner. 1993. Water quality improvement: nutrient removal from municipal wastewater by a southern Louisiana forested wetland. 2nd Biennial Symposium on Biogeochemistry of Wetlands, Baton Rouge, LA, 22-24 February.

CONNER, W. H. and B. D. Keeland. 1993. Regenerative potential of baldcypress in Lake Chicot, LA after 50 years of flooding. Society of Wetland Scientists, Edmonton, Canada, 30 May-3 June.

CONNER, W. H. 1993. Implications of sea level rise on coastal forests of the southern United States. Invited paper at Hilton Head Island International Symposium, Hilton Head, SC, 6-9 June.

MCLEOD, K. W., J. K. McCarron, and W. H. Conner. 1993. Inundation and salinity stress of wetland woody species. 44th AIBS Annual Meeting, Ames, IA, 1-5 August.

CONNER, W. H. 1993. Wetlands ecosystems management. Managing Forest Structure and Composition Short Course, Litchfield Beach, SC, 6 October.

HESSE, I. D., J. W. Day, Jr., and W. H. Conner. 1993. Improving water quality in Louisiana coastal waters through the use of watersheds: a case history involving municipal wastewater in Thibodaux, LA. 12th Biennial International Estuarine Research Federation Conference, Hilton Head, SC, 14-18 November.

CONNER, W. H. 1994. The latest in wetland research. Joint Meeting of NC Society of Consulting Foresters and SC Chapter- Association of Consulting Foresters. Wilmington, NC, 6-8 April.

BURKE, M. K. and W. H. Conner. 1994. Comparison of productivity values across a flooding gradient in a South Carolina coastal plain forest. Workshop on Harvesting Impacts on Southern Bottomland Hardwood Ecosystems, Stoneville, MS, 18-19 May.

CONNER, W. H., B. D. Keeland, and J. P. Megonigal. 1994. Forested wetland productivity: a study of regional processes. Workshop on Harvesting Impacts on Southern Bottomland Hardwood Ecosystems, Stoneville, MS, 18-19 May.

MCKEE, W. H. and W. H. Conner. 1994. Harvesting impacts on soils and nutrient cycling. Invited paper at Workshop on Harvesting Impacts on Southern Bottomland Hardwood Ecosystems, Stoneville, MS, 18-19 May.

CONNER, W. H. 1994. Growth and survival of six common forested wetland species after flooding with saltwater. VI International Congress of Ecology, Manchester, England, 21-26 August.



CONNER, W. H. 1994. Wetlands ecosystems management. Managing Forest Structure and Composition Short Course, Litchfield Beach, SC, 21 September.

BURKE, M. K. and W. H. Conner. 1995. A comparison of aboveground productivity values across a flooding gradient in a South Carolina coastal plain forest. National Interagency Workshop on Wetlands, New Orleans, LA, 3-7 April.

FUNDERBURK, E. L. and W. H. Conner. 1995. Restoration techniques for a thermally altered forested wetland. South Carolina Academy of Science, Greenville, SC, 7-8 April.

FUNDERBURK, E. L. and W. H. Conner. 1995. Growth and survival of forested wetland species planted in Pen Branch Delta on Savannah River Site, SC. Association of Southeastern Biologists, Knoxville, TN, 19-21 April.

MCCARRON, J. K., W. H. Conner, and K. W. McLeod. 1995. Inundation and salinity stress of a wetland woody species, buttonbush (*Cephalanthus occidentalis*). Association of Southeastern Biologists, Knoxville, TN, 19-21 April.

MCLEOD, K. W., J. K. McCarron, and W. H. Conner. 1995. Effects of inundation and salinity on three woody coastal species. Association of Southeastern Biologists, Knoxville, TN, 19-21 April.

CONNER, W. H. 1995. Outstanding research questions in the area of bottomland hardwood restoration - a university perspective. Invited paper at Artificial Regeneration of Bottomland Hardwoods: Reforestation/Restoration Research Needs Workshop, Stoneville, MS, 11-12 May.

MCLEOD, K. W., J. K. McCarron, and W. H. Conner. 1995. Effects of inundation and salinity on four bottomland oak species. Ecological Society of America, Snowbird, UT, 31 July-3 August.

BAKER, T. T., B. G. Lockaby, W. H. Conner, M. K. Burke, and J. A. Stanturf. 1995. Spatial variability in decomposition processes within forested floodplains: vegetation community linkages to regional decomposition. International Conference on Plant Litter Quality and Decomposition, Wye, England, 18-21 September.

CONNER, W. H. 1995. Wetlands ecosystems management. Managing Forest Structure and Composition Short Course, Litchfield Beach, SC, 25 September.

STANTURF, J. A., T. T. Baker III, B. G. Lockaby, W. H. Conner, and M. K. Burke. 1995. Fine root dynamics in a blackwater floodplain forest: a pilot study. Dynamics of Physiological Processes in Woody Roots, Ithaca, NY, 8-12 October.

CONNER, W. H., K. W. McLeod, and J. K. McCarron. 1995. Response of forested wetland species to increased flooding and salinity. Invited paper at Estuarine Research Federation's 13th Biennial International Conference, Corpus Christi, TX, 12-16 November.

CONNER, W. H., L. W. Inabinette, and E. Funderburk. 1996. The use of root pruning and tree shelters in regenerating forested wetlands in Pen Branch. Invited presentation at Savannah River Technology Center's Mini-symposium on the Restoration of Pen Branch, Aiken, SC, 13 February.

BAKER, T. T., B. G. Lockaby, W. H. Conner, M. K. Burke, and J. A. Stanturf. 1996. Belowground productivity and dynamics on the Coosawhatchie River floodplain: A pilot study. Southern Forested Wetlands workshop, Clemson, SC, 25-27 March.

CONNER, W. H., J. Bryant, and L. W. Inabinette. 1996. Impact of complete submergence upon three common wetland species. Southern Forested Wetlands Workshop, Clemson, SC, 25-27 March.

Burke, M. K., W. H. Conner and K. MILLER. 1996. Two years of litter, seed, and stemwood production in four forested communities in the South Carolina Coastal Plain. Southern Forested Wetlands workshop, Clemson, SC, 25-27 March.

CONNER, W. H. and M. Buford. 1996. Southern deepwater swamps. Invited paper at Southern Forested Wetlands workshop, Clemson, SC, 25-27 March.

FUNDERBURK, E. and W. H. Conner. 1996. Survival and growth of planted forested wetland species, Pen Branch Delta, Savannah River Site, S. C. Southern Forested Wetlands workshop, Clemson, SC, 25-27 March.

HESSE, I. D., W. H. Conner, and J. W. Day, Jr. 1996. Herbivory impacts on the regeneration of forested wetlands. Southern Forested Wetlands workshop, Clemson, SC, 25-27 March.

Megonigal, J. P., W. H. CONNER, S. Kroeger, and R. R. Sharitz. 1996. Aboveground production in Southeastern floodplain forests: A test of the subsidy-stress hypothesis. Southern Forested Wetlands workshop, Clemson, SC, 25-27 March.

BAKER, T. T., W. H. Conner, B. G. Lockaby, M. K. Burke, and J. A. Stanturf. 1996. Fine root dynamics in a floodplain forest. Ecological Society of America Meeting, Providence, RI, 11-15 August.

BURKE, M. K. and W. H. Conner. 1996. Phenology and partitioning of aboveground production in four deciduous communities along a wetness gradient in the ACE Basin, SC, USA. Ecological Society of America Meeting, Providence, RI, 11-15 August.

CONNER, W. H. 1996. Forested wetlands management. Managing Forest Ecosystems Short Course, Litchfield Beach, SC, 23 September.

CONNER, W. H., R. Todd, and L. W. Inabinette. 1997. Pocatigo Swamp forest planting demonstration project. Ninth Biennial Southern Silvicultural Conference, Clemson, SC, 25-27 February.

CONNER, W. H. 1997. Comparison of primary productivity of eight forested wetlands in South Carolina. Association of Southeastern Biologists, Greenville, SC, 16-19 April.

MCCARRON, J. K., K. W. McLeod and W. H. Conner. 1997. Effects of flooding and salinity stress on swamp tupelo (*Nyssa sylvatica*) and buttonbush (*Cephalanthus occidentalis*). Association of Southeastern Biologists, Greenville, SC, 16-19 April.

MCLEOD, K. W., J. K. McCarron, and W. H. Conner. 1997. Flooding and salinity effects on four bottomland oak species. Association of Southeastern Biologists, Greenville, SC, 16-19 April.

BAKER, T. T., W. H. Conner, B. G. Lockaby, M. K. Burke, and J. A. Stanturf. 1997. Fine root dynamics, leaf litter decomposition, and implications for nutrient cycling in the Southern region. The Coosawhatchie Bottomland Ecosystem Study Workshop, Charleston, SC, 13 May.

CONNER, W. H., R. Todd, and L. W. Inabinette. 1998. Pocotaligo swamp forest restoration project: preliminary results. Goal Setting and Success Criteria for Coastal Restoration, Charleston, SC, 13-15 January.

CONNER, W. H. 1998. Influence of hydrology on wetland forest productivity. Invited seminar, South Florida Water Management District, West Palm Beach, FL. 13 February.

Baker, T. T. III, W. H. CONNER, B. G. Lockaby, M. K. Burke, and J. A. Stanturf. 1998. Fine root dynamics in a mixed oak community. USFS Information and Cooperator's Meeting, Charleston, SC 25-26 February.

Baker, T. T. III, B. G. Lockaby, W. H. CONNER, J. A. Stanturf, and M. K. Burke. 1998. Spatial variability in litter decomposition processes. USFS Information and Cooperator's Meeting, Charleston, SC 25-26 February.

BURKE, M. K., B. G. Lockaby, and W. H. Conner. 1998. Aboveground production and nutrient circulation across a flooding gradient in a South Carolina coastal plain forest. USFS Information and Cooperator's Meeting, Charleston, SC 25-26 February.

CONNER, W. H. and L. W. Inabinette. 1998. Response of three forested wetland species to flooding and competition. Association of Southeastern Biologists, Monroe, LA, 15-18 April.

KOLKA, R. L., C. C. Trettin, E. A. Nelson, and W. H. Conner. 1998. Tree seedling survival across a hydrology gradient in a bottomland restoration. Annual Conference on Ecosystems Restoration and Creation, Tampa, FL, 14-15 May.

CONNER, W. H. 1998. Feasibility of relating tree rings to Everglades hydrology. Invited presentation at Tree Islands of the Greater Everglades Symposium, Boca Raton, FL, 14-15 July.

CONNER, W. H. 1998. Influence of hurricanes on coastal vegetation. Invited lecture for Plant Ecology class, Coastal Carolina University, 26, October.

CONNER, W. H. 1999. 25 years of forested wetland research: where have we been and where are we going? Seminar, Clemson Forestry Seminar Series, Clemson, SC 26 January.

CONNER, W. H., K. W. McLeod, L. W. Inabinette, V. H. Parrish, and M. R. Reed. 1999. Successful planting of tree seedlings in wet areas. 10<sup>th</sup> Biennial Southern Silvicultural Research Conference, Shreveport, LA, 16-18 February.

CONNER, W. H. and R. R. Sharitz. 1999. Forest communities of bottomland hardwoods. Invited paper at Ecology and Management of Bottomland Hardwood Ecosystems, Memphis, TN, 11-13 March.

CONNER, W. H., L. W. Inabinette, and E. F. Brantley. 1999. The use of tree shelters in restoring forest species to Pen Branch delta: 5 year results. Invited paper at The Pen Branch Delta Workshop, Clemson, SC, 12-14 April.

CONNER, W. H., L. W. Inabinette, and C. Cuthbertson. 1999. Invasion of South Carolina wetland forests by an unwanted exotic – Chinese tallow. Association of Southeastern Biologists, Wilmington, NC, 14-16 April.

Baker, T.T., III, B.G. Lockaby, and W.H. CONNER. 1999. Litter decomposition in four forested floodplain communities in the southern United States. Invited paper at Society of Wetland Scientists, Norfolk, VA, 6-11 June.

MCLEOD, K. W., W. H. Conner, and J. K. McCarron. 1999. Comparative ecophysiological responses to flooding and salinity of ten woody species. Society of Wetland Scientists, Norfolk, VA, 6-11 June.

MCLEOD, K. W., W. H. Conner, and J. K. McCarron. 1999. Effect of flooding and salinity on photosynthesis. International Botanical Congress, St. Louis, MO, August.

STANTURF, J. A., W. H. Conner, E. S. Gardiner, C. J. Schweitzer, and A. W. Ezell. 1999. Recognizing and overcoming difficult site conditions for afforestation of bottomland hardwoods. The Interaction Between Nursery Management and Silvicultural Operations, IUFRO, Auburn, AL. 28-30 September.

CONNER, W. H., J. W. Day, Jr., and G. P. Shaffer. 1999. An evaluation of four alternative flooding scenarios for the Bonnet Carre diversion, Mississippi River, Louisiana. Estuarine Research Federation, New Orleans, LA, 25-30 September.

MIHAILA, I. and W.H. Conner. 1999. The mathematics of nature: environmental modeling. Twelfth International Conference on Technology in Collegiate Mathematics. 4-7 Nov 1999, San Francisco, CA.

CONNER, W. H. 2000. Swamps – from wastelands to treasures. Invited presentation for National Estuarine Research Reserve Marshside Chat, Georgetown, SC, 7 March.

CONNER, W.H. 2000. Swamp ecology. Invited presentation to Lowcountry Chapter of

Wildlife Action. Georgetown, SC, 4 April.

CONNER, W. H., K. W. McLeod, and E. Colodney. 2000. Restoration methods for deepwater swamps. Invited paper at Sustainability of Wetlands and Water Resources Conference, Oxford, MS, 23-25 May.

CONNER, W. H. 2000. Floodplain systems of the southern United States. Invited paper at Society of Wetland Scientists Meeting, Quebec, Canada, 6-12 August.

CONNER, W.H. 2000. What's in a wetland? Invited presentation as part of Brookgreen Garden's Environmental Issues Series, 7 November.

Conner, W. H. and M. OZALP. 2001. Baldcypress restoration in a saltwater damaged area of South Carolina. 11<sup>th</sup> Biennial Southern Silvicultural Research Conference, Knoxville, TN, 19-22 March.

CONNER, W. H. and T. Socha. 2001. The use of native plant species to control erosion on an Intracoastal Waterway spoil bank. Association of Southeastern Biologists, New Orleans, LA, 4-7 April.

BUSBEE, S. and W. H. Conner. 2001. An ecological characterization of three seasonally flooded isolated ponds on the Waccamaw Neck, South Carolina. Association of Southeastern Biologists, New Orleans, LA, 4-7 April.

STANTURF, J., E. Gardiner, K. Outcalt, W.H. Conner, and J. Guldin. 2001. Restoration of southern forested ecosystems. Southern Forest Science Conference. Atlanta, GA, 26-28 November.

CONNER, W.H. 2002. Longleaf pine restoration. Invited presentation at Congaree Swamp National Monument Science Symposium, Hopkins, SC, 22-24 January.

CONNER, W. H. 2002. Cypress-tupelo swamps of the southern United States. Invited presentation at EPA Hydrophytic Workshop, Atlantic City, NJ, 20-22 March.

CONNER, W. H., T. Socha, H. Allen, and G. Hardee. 2002. Controlling erosion on the Atlantic Intracoastal Waterway using plants. Association of Southeastern Biologists, Boone, NC, 10-13 April.

OZALP, M. and W. H. Conner. 2002. Comparison of aboveground productivity of red-water and black-water forested wetland sites in South Carolina. Association of Southeastern Biologists, Boone, NC, 10-13 April.

OZALP, M., W. H. Conner, T. M. Williams, B. G. Lockaby, and D. H. Van Lear. 2002. Chemical constituents and hydrology of river systems affecting productivity of tidally influenced floodplain forests in coastal South Carolina. Society of Wetland Scientists, Lake Placid, NY, 2-7 June.

CONNER, W.H. 2002. A demonstration using trees, shrubs, and grasses to control erosion on Intracoastal Waterway slopes. Invited paper at SC Aquatic Plant Management Society meeting, 14-16 August, Myrtle Beach, SC.

CONNER, W.H., K.W. McLeod, and G.P. Shaffer. 2002. Baldcypress restoration in degraded forests of the southern United States. Wetland Restoration: Addressing Asian Issues Through International Collaboration, 6-20 September, Nanjing, China.

CONNER, W. H., L. W. Inabinette, and M. Ozalp 2003. Growth and survival of baldcypress planted in an old ricefield of coastal South Carolina. 12<sup>th</sup> Biennial Southern Silviculture Research Conference, 24-27 February, Biloxi, MS.

CONNER, W. H. and T. Socha. 2003. Growth and survival of plants used to control erosion on the Atlantic Intracoastal Waterway. Association of Southeastern Biologists Meeting, 9-12 April, Washington, DC.

MCLEOD, K. W., W. H. Conner, and J. K. McCarron. 2003. Response of baldcypress to saline inundation. Association of Southeastern Biologists Meeting, 9-12 April, Washington, DC.

CONNER, W.H. 2003. Wetland restoration in South Carolina. Invited speaker at Rotary Club, 11 June, Georgetown, SC.

CONNER, W.H. 2003. Isolated freshwater wetlands from an ecological and hydrologic perspective. Invited speaker at Coastal Issue Workshop: Roles, Regulations and the Future of Isolated Freshwater Wetlands, 20 June, Georgetown, SC.

CONNER, W. H. 2003. Use of trees, shrubs, and grasses to control erosion on AIWW: Year three. Invited presentation at South Carolina Aquatic Plant Management Society Meeting, 13-15 August, Moncks Corner, SC.

CONNER, W. H. 2003. What are isolated freshwater wetlands? Invited presentation DHEC Council on Coastal Issues Forum, 3 October, Pinopolis, SC.

CONNER, W. H., T. Williams, G. Kessler, R. Franklin, P. Layton, G. Wang, D. Van Lear, T. Straka, L. Roth, E. Cooper, C. LeShack, K. McIntyre, R. Mitchell, S. Jack, W. Haynie, A. Nygaard, L. Hay, D. Beach, J. Lareau, Harry Lesesne, M. Robertson, and P. Ferral. 2004. South Carolina Lowcountry Forest Conservation Project. Coastal Plain Chapter of Society for Ecological Restoration, 25-26 March, Raleigh, NC.

CONNER, W. H., G. R. Askew, and J. T. Vernon. 2004. Community Structure and Aboveground Productivity in a Coastal Pine-Swamp Blackgum Forest, South Carolina, USA. Association of Southeastern Biologists Meeting, 14-17 April, Memphis, TN.

Ozalp, M., W. H. CONNER, T. M. Williams, and B. G. Lockaby. 2004. Water quality and nutrient exchange during a low flow period in the coastal plain of South Carolina. Society of Wetland Scientists, 18-23 July, Seattle, WA.



Conner, W. H., L. W. Inabinette, T. W. Doyle, and K. W. KRAUSS. 2004. Restoration potential of tidal freshwater swamps following saltwater impact of hurricane surge in coastal South Carolina, USA. The 7th INTECOL International Wetlands Conference, 25-30 July, Utrecht, The Netherlands.

Doyle, T. W., W. H. Conner, L. W. Inabinette, K. W. KRAUSS. 2004. Dendroecological investigation of saltwater intrusion on a tidal freshwater swamp in coastal South Carolina, USA. The 7th INTECOL International Wetlands Conference, 25-30 July, Utrecht, The Netherlands.

CONNER, W.H. 2004. Bottomland Hardwood Management. Topics in Conservation Workshop, 5 August, Georgetown, SC.

Day, J.W., W.H. CONNER, A. Nyman, G. Shaffer. 2004. Historical changes in hydrology and sediment in coastal forests. 18-19 August. Governor's Coastal Wetland Forest Conservation and Use Meeting, Baton Rouge, LA.

CONNER, W.H., K. McLeod, M. Aust, E. Gardiner, G. Shaffer, J. Chambers, G. Lenhard, R. Souther-Effler, J.W. Day. 2004. Silviculture, herbivory, and regeneration in baldcypress/tupelo forests. 18-19 August. Governor's Coastal Wetland Forest Conservation and Use Meeting, Baton Rouge, LA.

CONNER, W.H. 2004. Overview of resource: yesterday, today, and tomorrow. 14-15 September. Management Opportunities in Bottomland Hardwood, Forested Wetlands, and Riparian Areas of South Carolina Workshop, Georgetown, SC.

CONNER, W.H. 2004. Silvicultural systems for cypress/tupelo wetlands. 14-15 September. Management Opportunities in Bottomland Hardwood, Forested Wetlands, and Riparian Areas of South Carolina Workshop, Georgetown, SC.

CONNER, W.H. 2005. Overview of Science Working Group Final Report. 12 January. Governor's Coastal Wetland Forest Conservation and Use Meeting, Baton Rouge, LA.

CONNER, W.H., K.W. Krauss, T.W. Doyle, J.L. Whitbeck. 2005. Degradation processes and coastal freshwater swamp forests responses in South Carolina and Louisiana: project description and preliminary data. 22-23 March. CESU meeting, Gainesville, FL.

DOYLE, T.W., W.H. Conner, K.W. Krauss, J.L. Whitbeck. 2005. Degradation of coastal freshwater swamp forests in South Carolina and Louisiana: project description and preliminary data. 30 March-2 April. Communication and Collaboration: Coastal Systems of the Gulf of Mexico and Southeastern United States, Pensacola, FL.

Conner, W.H., K.W. KRAUSS, and T.W. Doyle. 2005. Ecology of Floodplain Forests in Coastal Louisiana and South Carolina. 5-10 June. Society of Wetland Scientists Annual Meeting, Charleston, SC.



CONNER, W.H., W.D. Mixon, II, G.W. Wood. 2005. Maritime forest habitat dynamics on Bulls Island, Cape Romain National Wildlife Refuge, SC, following Hurricane Hugo. 5-10 June. Society of Wetland Scientists Annual Meeting, Charleston, SC.

CONNER, W., T. Williams, R. Franklin, G. Kessler, and A. Nygaard. 2005. South Carolina lowcountry forest conservation project: wetland and bottomland hardwood management. 5-10 June. Society of Wetland Scientists Annual Meeting, Charleston, SC.

DOYLE, T.W., W.H. Conner, J.L. Whitbeck, K.W. Krauss, and C.M. Swarzenski. 2005. Coastal Forests of the Southeast: Perspectives on Land-use, Disturbance, and Climate Change. 5-10 June. Society of Wetland Scientists Annual Meeting, Charleston, SC.

Faulkner, S.P., W.H. Conner, R.F. Keim, S.L. King, J.L. Chambers, J.W. Day, E.S. Gardiner, M.S. Hughes, K.W. MCLEOD, C.A. Miller, J.A. Nyman, and G. Shaffer. 2005. Louisiana's Science Working Group on coastal wetland forest conservation and use: process, findings, and recommendations. 5-10 June. Society of Wetland Scientists Annual Meeting, Charleston, SC.

MCLEOD, K.W., W.H. Conner, and J.K. McCarron. 2005. Ecophysiological responses of forest species in the southeastern coastal zone exposed to chronic and acute saltwater flood pulses. 5-10 June. Society of Wetland Scientists Annual Meeting, Charleston, SC.

ZENGEL, S. and W.H. Conner. 2005. Wild pig disturbance in floodplain wetlands at Congaree National Park, South Carolina, 2000-2003. 5-10 June. Society of Wetland Scientists Annual Meeting, Charleston, SC.

CHAMBERS, J. L., R. F. Keim, W. H. Conner, J. W. Day Jr., S. P. Faulkner, E. S. Gardiner, M. S. Hughes, S. L. King, K. W. McLeod, C. A. Miller, J. A. Nyman, and G. P. Shaffer. 2005. Conservation of coastal forests in Louisiana. 18-20 July. Louisiana Natural Resources Symposium, Baton Rouge, LA.

CONNER, W. H., K. W. Krauss, T. W. Doyle, and J. L. Whitbeck. 2006. Degradation processes and coastal freshwater swamp forests responses in South Carolina and Louisiana: Year 2. 14-15 March. PSAC-CESU Annual Meeting, Clemson, SC.

CONNER, W. H. 2006. Bottomland hardwood management: working with cherrybark oak. held 30 March. DDCF Workshop for Foresters and Landowners, Cheraw, SC.

CHAMBERS, J. L., W. H. Conner, R. F. Keim, S. P. Faulkner, J. W. Day, E. S. Gardiner, M. S. Hughes, S. L. King, K. W. McLeod, C. A. Miller, J. A. Nyman, and G. P. Shaffer. 2006. Towards sustainable management of Louisiana's coastal wetland forest: problems, constraints, and a new beginning. 8-12 April. International Conference on Hydrology and Management of Forested Wetlands, New Bern, NC.

CONNER, W. H., R. Franklin, T. Williams, G. Kessler, and A Nygaard. 2006. Bottomland hardwood management demonstrations for South Carolina's Lowcountry Forest Conservation

Project. 8-12 April. International Conference on Hydrology and Management of Forested Wetlands, New Bern, NC.

Day, J.W., Jr., W.H. CONNER, and G.P Shaffer. 2006. The importance of pulsed physical events for Louisiana forested wetlands. 8-12 April. International Conference on Hydrology and Management of Forested Wetlands, New Bern, NC.

HUGHES, M. S., J. L. Chambers, R. F. Keim, W. H. Conner, J. W. Day Jr., S. P. Faulkner, E. S. Gardiner, S. L. King, K. W. McLeod, C. A. Miller, J. A. Nyman, and G. P. Shaffer. 2006. Can coastal cypress-tupelo swamps be reliably regenerated from stump sprouts? 8-12 April. International Conference on Hydrology and Management of Forested Wetlands, New Bern, NC.

KEIM, R. F., J. L. Chambers, W. H. Conner, J. W. Day Jr., S. P. Faulkner, E. S. Gardiner, M. S. Hughes, S. L. King, K. W. McLeod, C. A. Miller, J. A. Nyman, and G. P. Shaffer. 2006. Ecological consequences of changing hydrological conditions in wetland forests of coastal Louisiana. 21–24 May. American Institute of Hydrology. International Conference on Challenges in Coastal Hydrology and Water Quality, Baton Rouge, LA.

CONNER, W. H., B. G. Lockaby, and J. Mitchell. 2006. Forested floodplains of the southeastern United States. 9-14 July. Society of Wetland Scientists Annual Meeting, Cairns, Australia.

DOYLE, T. W., W. H. Conner, and K. W. Krauss. 2006. Impact of global climate change and sea level rise on tidal freshwater forests of the southern United States. 9-14 July. Society of Wetland Scientists Annual Meeting, Cairns, Australia.

FAULKNER, S. P., W. Barrow, W. H. Conner, B. Couvillion, and J. L. Whitbeck. 2006. Hurricane impacts on coastal forests in Louisiana. 6-11 August. Ecological Society of America, Memphis, TN.

KEIM, R. F., J. L. Chambers, W. H. Conner, J. W. Day Jr., M. S. Hughes, S. P. Faulkner, E. S. Gardiner, S. L. King, K. W. McLeod, C. A. Miller, J. A. Nyman and G. P. Shaffer. 2006. Hydrological and ecological changes in coastal wetland forests in the delta of the Mississippi River. 9-14 July. Society of Wetland Scientists Annual Meeting, Cairns, Australia.

KRAUSS, K. W., J. L. Whitbeck, T. W. Doyle, and W. H. Conner. 2006. Determining controls over soil carbon dioxide efflux from tidal freshwater swamp forests. 9-14 July. Society of Wetland Scientists Annual Meeting, Cairns, Australia.

CONNER, W. H. 2006. Crop tree management for hardwoods. 12 September. DDCF Practicing Conservation Forestry at Deer Hill Plantation workshop, Lane, SC.

CONNER, W. H. 2006. Hardwood management options. 21 September. DDCF Conservation Forestry at Rose Hill and Nemours: Managing Bottomland Hardwoods workshop, Yemassee, SC.

CONNER, W. H. 2006. Greentree reservoir management. 28 September. South Carolina Tree Farm 2006 Field Tour and Awards Ceremony, Columbia, SC.

CONNER, W.H. 2006. Baldcypress swamps: past, present, future? 18 October. Hobcaw Lecture Series, Georgetown, SC.

CONNER, W. H., K. W. Krauss, and T. W. Doyle. 2006. Climate change implications for tidal freshwater swamp forests in South Carolina and Louisiana. 19-21 October. Southeastern Estuarine Research Society meeting, Savannah, GA.

CONNER, W. H. 2007. The PISCES Project: Development in an environmentally sustainable manner. 4 January. Invited presentation at the 4<sup>th</sup> Annual Georgetown County Economic Development Forum, Pawleys Island, SC.

LEININGER, T., E. Gardiner, P. Hamel, B. Lockhart J. Chambers, W. Conner, and K. Krauss. 2007. Bottomland hardwood and coastal forest restoration in the Mississippi Alluvial Valley: Pathways forward. 13-15 March. Invited presentation, Lower Mississippi Alluvial Valley (LMAV) Science Conference, Vicksburg, MS.

DUBERSTEIN, J., W.H. Conner, K.W. Krauss, and T.W. Doyle. 2007. Interactive effects of drought severity, hurricanes, and sea-level rise on tidal freshwater forested wetlands of the southeast under a changing climate regime. 15-17 March. Joint AERS and SEERS Spring 2007 Meeting, Pine Knoll Shores, NC.

CONNER, W. H., K. W. Krauss, and T. W. Doyle. 2007. Ecology of tidal freshwater forests in coastal deltaic Louisiana and northeastern South Carolina. Association of Southeastern Biologists Meeting, 18-21 April, Columbia, SC.

COX, S., William Conner, Dan Hitchcock, and Jeffery Vernon. 2007. PISCES: Program of Integrated Study for Coastal Environmental Sustainability. Emerging Issues Along Urban-Rural Interfaces II Conference, 9-12 April, Atlanta, GA.

OGASAWARA, M., J. Duberstein, and W.H. Conner. 2007. Spatial analysis of herbaceous vegetation in South Carolina tidally influenced freshwater forested wetlands. Association of Southeastern Biologists Meeting, 18-21 April, Columbia, SC.

CONNER, W.H., T.W. Doyle, K.W. Krauss, J. Whitbeck, C. Swarzenski, R. Day, and J. Duberstein. 2007. Forest response, hydrologic relations, and carbon balance in tidal freshwater swamps of the southeast under climate change: interactive effects of droughts, sea-level rise, and hurricanes. 10-15 June. Society of Wetland Scientists Annual Meeting, Sacramento, CA.

DOYLE, T.W., W.H. Conner, and K.W. Krauss. 2007. Assessing the effect of salinity pulsing on long-term growth of baldcypress in tidal freshwater swamps. 10-15 June. Society of Wetland Scientists Annual Meeting, Sacramento, CA.

CONNER, W.H. 2007. Tidal freshwater swamps of the Waccamaw Neck: Past, present, future? 25 September. Invited presentation to Georgetown Library Senior Scholars Program, Georgetown, SC.

CONNER, W.H., T.W. Doyle, and K.W. Krauss. 2007. Coastal Forests of the Southeastern United States: Perspectives on Land-use, Disturbance, and Climate Change. 28-30 November. Invited paper at International Delta Roundtable Conference, Lafayette, LA.

ZENGEL, S. and W.H. Conner. 2008. Wild pig disturbance in floodplain wetland forests and adjacent pine flatwoods at Congaree National Park, 2000-2003. 26-28 February. 2008 Research Symposium, Columbia, SC.

KRAUSS, K.W., T.W. Doyle, W.H. Conner, R.H. Day, and J.A. Duberstein. 2008. Structure and growth of tidal freshwater forested wetlands in relation to salinity and fertility. 4-6 March. Integrating Science into the Restoration and Management of Floodplain Ecosystems of the Southeast, Little Rock, AR.

KEIM, R.F., L.L. Battaglia, W.H. Conner, and D. De Steven. 2008. Hydrologic controls on swamp forest regeneration and sustainability. 4-6 March. Integrating Science into the Restoration and Management of Floodplain Ecosystems of the Southeast, Little Rock, AR.

DUBERSTEIN, J., W.H. Conner, K.W. Krauss, and T.W. Doyle. 2008. The effects drought, increased salinity, and hurricane disturbance on tidal freshwater forest productivity and greenhouse gas production. 20 March. South Carolina Academy of Sciences, Clemson, SC.

CONNER, W.H. 2008. Coastal forested wetlands: interaction between man and nature. McLeod Hospital Family Medicine Lecture Series, 7 August, Florence, SC.

HITCHCOCK, D.R., A.D. Jayakaran, T.M. Williams, B. Song, and W.H. Conner. 2008. Coastal Development in South Carolina: Stormwater Research and Education Opportunities at Bannockburn Plantation. 12-14 August. Building Sustainable Communities for the 21<sup>st</sup> Century, Charleston, SC.

KRAUSS, K.W., T.W. Doyle, W.H. Conner, R.H. Day, and J.A. Duberstein. 2008. Climate change impact on soil salinity and tree growth of tidal freshwater forested wetlands of the southeastern United States. 25-28 August 2008. Adaptation of Forests and Forest Management to Changing Climate with Emphasis on Forest Health: A Review of Science, Policies, and Practices, Umeå, Sweden.

HITCHCOCK, D.R., W.H. Conner, S. Esswein, C. Post, T.M. Williams, A.D. Jayakaran, B. Song, E. Mikhailova, and R. Baldwin. 2008. Creating digital coastal watersheds: the remote data acquisition network at Bannockburn Plantation, Georgetown, County, SC. South Carolina Water Resources Conference, 14-15 October, Charleston, SC.

ZENGEL, S.A. and W.H. Conner. 2008. Potential effects of wild pigs on water quality and aquatic biota in floodplain wetland and stream habitats at Congaree National Park, South Carolina. South Carolina Water Resources Conference, 14-15 October 2008, Charleston, SC.

CONNER, W.H. and L. Fabrizio. 2008. Current concerns on the regeneration potential in freshwater forested wetlands of the southern United States. Climate Change, Wetlands, and Water Resources of the Southeast, Fall Meeting of the combined SAC and SCC Chapters of SWS, 9-10 October, Tuscaloosa, AL.

Duberstein, J.A. and W.H. CONNER. 2009. Differences in the use of hummocks and hollows by tidal freshwater wetland trees. Southeastern Estuarine Research Society, 19-21 March, Conway, SC.

CONNER, W.H. 2009. Global climate change: Implications for coastal wetlands of South Carolina. Invited presentation. George Goes Green Environmental Awareness Celebration, 18 April, Georgetown, SC.

FABRIZIO, L.E. and W.H. Conner. 2009. Status and trends of cypress wetland forests in Georgia – options for conservation, restoration, and utilization. Georgia Water Resources Conference, 27-29 April, Athens, GA.

DUBERSTEIN, J.A. and W.H. Conner. 2009. Differential use of microtopography by trees in a tidal freshwater forested wetland. Society of Wetland Scientists Annual Meeting, 22-26 June, Madison, WI.

DUBERSTEIN, J.A., W.H. Conner, and K.W. Krauss. 2009. Ecology of tidal freshwater swamps: tree community use of microtopography and baldcypress water use related to salinity stress. 15-16 October. PSAC-CESU Annual Meeting, Orange Beach, AL.

CONNER, W.H. 2010. An examination of four South Carolina isolated freshwater forested wetlands from an ecological and hydrologic perspective. Invited presentation. Land Grant and Sea Grant National Water Conference, 21-25 February, Hilton Head, SC.

KRAUSS, K.W., J.L. Whitbeck, W.H. Conner, and T.W. Doyle. 2010. Defining controls over soil greenhouse gas fluxes as tidal freshwater forested wetlands transition to marsh. USGS Global Change Program Climate Change Conference, 9-11 March, Denver, CO.

ZENGEL, S. and W.H. Conner. 2010. Ground cover and understory vegetation in relation to habitat type and wild pig rooting at Congaree National Park, South Carolina. Wild Pig Conference, 11-13 April, Pensacola, FL.

CONNER, W.H. 2010. Tidal freshwater forests of the southeastern U.S. and the implications of sea level rise. Elise B. Newell Seminar Series, invited presentation. Center for Water and Air Quality, Florida A&M. 16 April, Tallahassee, FL.

DUBERSTEIN, J.A., K.W. Krauss, and W.H. Conner. 2010. Physiological and growth differences of mature baldcypress trees in relation to salinity in "freshwater" tidal swamps undergoing persistent drought. Association of Southeastern Biologists Annual Meeting. 7-10 April, Asheville, NC.

CORMIER, N., G.B. Noe, K.W. Krauss, B.G. Lockaby, and W.H. Conner. 2010. Forest productivity and nutrient mineralization along a tidal freshwater forested wetland to marsh transition. American Society of Limnology and Oceanography Summer Meeting, 6-10 June, Santa Fe, NM.

DUBERSTEIN, J.A., K.W. Krauss, and W.H. Conner. 2010. Effects of microtopography on transpirational characteristics of baldcypress in a tidal freshwater swamp. Society of Wetland Scientists Annual Meeting. June 27-July 2. Salt Lake City, UT.

EDWARDS, B., G. Chastain, W. Conner, and W. Allen. 2010. Planning and Designing Sustainable Buildings within the Belle Baruch Foundation's 17,500 acre Hobcaw Barony. SC Chapter of American Planning Association Meeting. 27-29 Oct, Pawleys Island, SC.

CONNER, W.H., C. Hupp, B.G. Lockaby, G. Blosser, and M. Ricker. 2010. Understanding relationships between sediment and carbon deposition and floodplain forest functions in the Congaree National Park, SC. Piedmont-South Atlantic CESU Annual Meeting, 3-4 November, Greenville, NC.

CONNER, W.H., K.W. Krauss, G.B. Noe, J. Duberstein, N. Cormier, and C. Stagg. 2010. Climate change and tidally influenced freshwater forested wetlands of the southeast: understanding functional ecological attributes of forest transitions to marsh– Year 1. Piedmont-South Atlantic CESU Annual Meeting, 3-4 November, Greenville, NC.

CHOW, A., T.M. Williams, W.H. Conner, and B. Song. 2010. Sea level rise enhances halocarbon productions in low-lying coastal ecosystems in southeastern US. American Geophysical Union, 13-17 December, San Francisco, CA.

CHOW, A., W.H. Conner, T. Williams, and B. Song. 2011. Sea level rise enhances halocarbon productions in low-lying coastal ecosystems in southeastern US. SAC/MAC Joint Chapter Meeting, Wetlands, Water Resources, and People. 7-8 March, Reston, VA.

CONNER, W.H., C. Hupp, B.G. Lockaby, E.R. Schenk, G. Blosser, and M. Ricker. 2011. Understanding relationships between sediment and carbon deposition and floodplain forest functions in the Congaree National Park, SC. SAC/MAC Joint Chapter Meeting, Wetlands, Water Resources, and People. 7-8 March, Reston, VA.

CONNER, W.H., K.W. Krauss, G.B. Noe, J.A. Duberstein, N. Cormier, and C. Stagg. 2011. Climate change and tidally influenced freshwater forested wetlands of the Southeastern US: understanding functional ecological processes of forest transitions to marsh. SAC/MAC Joint Chapter Meeting, Wetlands, Water Resources, and People. 7-8 March, Reston, VA.

deGravelles, W. and W.H. CONNER. 2011. Growth and mortality of sub-canopy baldcypress (*Taxodium distichum* [L.] Rich.) released in artificial canopy gaps in a North Carolina swamp. SAC/MAC Joint Chapter Meeting, Wetlands, Water Resources, and People. 7-8 March, Reston, VA.



DUBERSTEIN, J.A., W.H. Conner, and K.W. Krauss. 2011. Salinity affects growth and water use of mature baldcypress trees in freshwater tidal swamps. SAC/MAC Joint Chapter Meeting, Wetlands, Water Resources, and People. 7-8 March, Reston, VA.

DUBERSTEIN, J.A. and W.H. Conner. 2011. Freshwater tidal swamp communities on the Savannah River floodplain. Southeastern Estuarine Research Society meeting, 16-18 March, Athens, GA.

DUBERSTEIN, J.A. and W.H. Conner. 2011. Freshwater tidal swamp communities of the southeastern United States. Association of Southeastern Biologists Annual Meeting. 13-15 April, Huntsville, AL.

CORMIER, N., K.W. Krauss, and W.H. Conner. 2011. Patterns of forest productivity explain soil nitrogen concentrations in forested wetlands. Society of Wetland Scientist meeting, 3-8 July, Prague, Czech Republic.

CONNER, W.H., K.W. Krauss, N. Cormier, and B.G. Lockaby. 2011. Freshwater forested wetlands of the southeastern US: trends in aboveground productivity in relation to hydrology and salinity. Soil Science Society of America, 16-19 October, San Antonio, TX.

Conner, W.H., K.W. Krauss, G.B. Noe, J. Duberstein, N. Cormier, and C. Stagg. 2011. Climate change and tidally influenced freshwater forested wetlands of the southeast: understanding functional ecological attributes of forest transitions to marsh— Year 2. Cooperative Ecosystems Studies Unit Southeast Regional Meeting, 25-27 October, St. Petersburg, FL.

CONNER, W.H. 2011. Freshwater forested wetlands of the southeastern US: aboveground productivity in relation to hydrology and salinity. 27 October, S.A.F.E.S. Faculty, Staff, and Graduate Students Seminar, Clemson, SC.

JONES, S., W.H. Conner, S. Momin, I. Himelright and S. Zink. 2011. Using administrative medical claims data to estimate underreporting and map spatio-temporal clusters of infectious zoonotic diseases in Tennessee. 139th APHA Annual Meeting, 29 October – 2 November, Washington, DC.

JONES, S., W.H. Conner, S. Momin, I. Himelright and S. Zink. 2011. Spatially explicit non-linear models for explaining the occurrence of infectious zoonotic diseases. 139th APHA Annual Meeting, 29 October – 2 November, Washington, DC.

DUBERSTEIN, J.A., K.W. Krauss, and W.H. Conner. 2012. Site salinity affects fertility and forest structure in coastal swamp forests. Association of Southeastern Biologists Annual Meeting. 3-7 April, Athens, GA.

HUTCHINSON, S., W. deGravelles, and W.H. Conner. 2012. Suppressed baldcypress growth response to artificial canopy gap creation in a North Carolina, USA swamp. Association of Southeastern Biologists Annual Meeting. 3-7 April, Athens, GA.

CHOW, A.T., J. Wang, and W.H. Conner. 2012. Quantifying Fenton reaction contributions to greenhouse gas emissions from coastal wetland soils. INTECOL/Society of Wetland Scientist meeting, 3-8 June, Orlando, FL.

CONNER, W.H. and D. Tufford. 2012. Tree growth response across an hydrological gradient at Four Holes Swamp, South Carolina. INTECOL/Society of Wetland Scientist meeting, 3-8 June, Orlando, FL.

CORMIER, N., C.L. Stagg, K.W. Krauss, W.H. Conner, and D.R. Cahoon. 2012. Soil surface elevation change along a tidal freshwater forested wetland to marsh transition. INTECOL/Society of Wetland Scientist meeting, 3-8 June, Orlando, FL.

DUBERSTEIN, J.A., K.W. Krauss, and W.H. Conner. 2012. Ecophysiological proficiency of mature baldcypress on hummocks and in hollows within a freshwater tidal swamp. INTECOL/Society of Wetland Scientist meeting, 3-8 June, Orlando, FL.

STAGG, C.L., N. Cormier, K.W. Krauss, and W.H. Conner. 2012. The effect of saltwater intrusion on belowground decomposition in wetlands transitioning from freshwater tidal forests to oligohaline marsh. INTECOL/Society of Wetland Scientist meeting, 3-8 June, Orlando, FL.

JONES, S. and W.H. Conner. 2012 Improving the scale of study for spatio-temporal modeling of arthropod-borne zoonotic diseases. 140th APHA Annual Meeting, October 27 - October 31, San Francisco, CA.

NOE, G.B., K.W. Krauss, C.R. Hupp, S.H. Ensign, B.G. Lockaby, and W.H. Conner. 2012. Influence of climate change and geomorphology on nutrient biogeochemistry in tidal freshwater forested wetlands. AGU Chapman Conference on Hydrogeomorphic Feedbacks and Sea Level Rise in Tidal Freshwater River Ecosystems. 13-16 November. Reston, VA.

PIERFELICE, K., B.G. Lockaby, K.W. Krauss, G.B. Noe, and W.H. Conner. 2012. Effects of salinity on net primary productivity and biogeochemical processes in tidal wetlands. AGU Chapman Conference on Hydrogeomorphic Feedbacks and Sea Level Rise in Tidal Freshwater River Ecosystems. 13-16 November. Reston, VA.

STAGG, C.L., N. Cormier, K.W. Krauss, W.H. Conner, and D.R. Cahoon. 2012. Influences of saltwater intrusion on ecological functions: habitat shifts to alternative stable states. AGU Chapman Conference on Hydrogeomorphic Feedbacks and Sea Level Rise in Tidal Freshwater River Ecosystems. 13-16 November. Reston, VA.

DUBERSTEIN, J.A., W.H. Conner, J.W. Day, Jr., and S. Hutchinson. 2013. Forest community changes along a flooding/elevation gradient in a South Louisiana forested wetland from 1983-2009. Society of Wetland Scientist meeting, 3-7 June, Duluth, MN.

JAYAKARAN, A.D., J. Duberstein, S. Hutchinson, J. Palazzolo, and W.H. Conner. 2013. Sap flow and water table dynamics in a coastal South Carolina isolated wetland. AEES 13th Annual Meeting, Engineering Ecosystems for Water and Energy, 11 June, East Lansing, MI.

CONNER, W.H., J.A. Duberstein, and S. Hutchinson. 2013. Changes in a south Louisiana forested wetland community along a flooding/elevation gradient from 1983 to 2009. Joint Meeting of SAC/FAESS/FAEP, Wetland Resources and Regulations in a Changing World, 6-9 October, Tampa FL.

CONNER, W.H., A.T. Chow, D.O. Suhre, and J.J. Wang. 2013. Sea level rise modifies ecosystem processes in Winyah Bay, South Carolina wetlands. Joint Meeting of SAC/FAESS/FAEP, Wetland Resources and Regulations in a Changing World, 6-9 October, Tampa FL.

DUBERSTEIN, J.A., W.H. Conner, and K.W. Krauss. 2013. A community-based framework for comparing tidal freshwater forested wetlands. Joint Meeting of SAC/FAESS/FAEP, Wetland Resources and Regulations in a Changing World, 6-9 October, Tampa FL.

CONNER, W.H. 2013. Potential impacts of climate change on forested wetlands. Invited presentation at Conservation of Coastal Habitats in a Changing Climate, Kick-Off Workshop for the Climate Change Vulnerability Assessment Tool for Coastal Habitats Pilot Project at the North Inlet-Winyah Bay National Estuarine Research Reserve. 13 November, Georgetown, SC.

CHOW A.T., W.H. Conner, R.C. Rhew, D. Suhre, J.J. Wang. 2013. Sea level rise modifies biogeochemical cycles in forested wetlands in Winyah Bay, South Carolina. AGU Fall Meeting, 9-13 December, San Francisco, CA.

JAYAKARAN, A.D., J. Duberstein, S. Hutchinson, K. Krauss, W.H. Conner, and J. Palazzolo. 2014. Examining sap flux and water table relationships in a coastal South Carolina isolated wetland. ASABE meeting on Evapotranspiration: Challenges in Measurement and Modeling of Leaf to the Landscape Scale and Beyond. 7-11 April, Raleigh, NC.

CONNER, W.H. 2014. Long-term trends in NPP of Hobcaw swamps. 2014 Hobcaw Research Symposium. 4 May, Georgetown, SC.

JAYAKARAN, A.D., W.H. Conner, D.R. Hitchcock, S. Hutchinson, A.T. Chow, B. Song, T.M. Williams. 2014. Strawberry Swamp: a swamp on the edge. AEES 14<sup>th</sup> Annual Meeting, 9-13 June, Charleston, SC.

WILLIAMS, T.M., B. Song, and W.H. Conner. 2014. Role of hurricanes and drought in mortality of tidal forested wetlands using historical aerial photography. S.C. Water Resources Conference, 15-16 October, Columbia, SC.

CHOW, A.T. and W.H. Conner. 2014. Exploring rising tides in South Carolina. Earthwatch Summit, 6-8 November, Cambridge, MA.

HUTCHINSON, S. and W.H. Conner. 2014. From tidal forest to marsh; the process. South Carolina Chapter of The Wildlife Society Annual Meeting, 12-13 November, Florence, SC.

CONNER, W.H., K.W. Krauss, G.B. Noe, J.A. Duberstein, N. Cormier, and C.L. Stagg. 2015. Biogeochemical and surface elevation controls over tidally influenced freshwater forested wetlands as they transition to marsh. Fifth Interagency Conference on Research in the Watersheds, Headwaters to Estuaries: Advances in Watershed Science and Management, 2-5 March, Charleston, SC.

JAYAKARAN, A.D., T.M. Williams, and W.H. Conner. 2015. Monitoring water quality changes in a forested freshwater wetland threatened by salinity. Fifth Interagency Conference on Research in the Watersheds, Headwaters to Estuaries: Advances in Watershed Science and Management, 2-5 March, Charleston, SC.

CONNER, W.H., B. Song, T.M. Williams, A.D. Jayakaran, A.T. Chow, and D.R. Hitchcock. 2015. Impacts of saltwater intrusion on a tidal freshwater forested wetland on Winyah Bay, South Carolina. Society of Wetland Scientist meeting, 31 May-4 June, Providence, RI.

DUBERSTEIN, J.A. and W.H. Conner. 2015. Interstitial salinity dynamics in lower Savannah River tidal marshes and freshwater forests. Society of Wetland Scientist meeting, 31 May-4 June, Providence, RI.

NOE, G.B., K.W. Krauss, C.L. Stagg, C. Hupp, W.H. Conner, B.G. Lockaby, K. Pierfelice, D.R. Schoolmaster. 2015. Salinization impacts on carbon budgets and soil surface elevation in southeastern US tidal freshwater forested wetlands. Society of Wetland Scientist meeting, 31 May-4 June, Providence, RI.

KRAUSS, K.W., G.B. Noe, C.L. Stagg, C.R. Hupp, N. Cormier, W.H. Conner, J.A. Duberstein, B.G. Lockaby, K.N. Pierfelice, and D.R. Schoolmaster. 2015. How tidal freshwater forested wetlands response to salinization affects carbon balance and soil surface elevation. Ecological Society of America Annual Meeting, 9-14 August, Baltimore, MD.

MILLER, D., A. Chow, and W.H. Conner. 2015. Retreat of tidally influenced freshwater forested wetlands in the southeast: biogeochemical investigations and field support. PSAC-CESU Meeting, 9-10 September, Athens, GA.

CONNER, W.H., A.D. Jayakaran, T.M. Williams, and A.T. Chow. 2015. Transition from tidal freshwater forest to brackish marsh in Strawberry Swamp. Society of Wetland Scientists South Atlantic Chapter Meeting, 26-27 October, Athens, GA.

DUBERSTEIN, J.A., J. Salter, Jr., W.H. Conner. 2015. Savannah Harbor Expansion Project vegetation monitoring. Society of Wetland Scientists South Atlantic Chapter Meeting, 26-27 October, Athens, GA.

MILLER, D., W.H. Conner, D.O. Suhre, and A.T. Chow. 2015. Transitions from freshwater forested wetland to salt marsh – impacts of sea level rise. Soil Science Society of America Meeting, 15-18 November, Minneapolis, MN.

SUHRE, D.O., W.H. Conner, and A.T. Chow. 2015. Use of citizen scientists in sea level rise research. Soil Science Society of America Meeting, 15-18 November, Minneapolis, MN.

CHOW, A.T. and W.H. Conner. 2015. Transitions from freshwater forested wetland to salt marsh – impacts of sea level rise. Soil Science Society of America Meeting, 15-18 November, Minneapolis, MN.

ALLEN, S.T., A.G. McCombs, A.L. Hiscox, K.W. Krauss, J.A. Duberstein, W.H. Conner, R.F. Keim. 2016. Salinity and hydrology control evapotranspiration fluxes from a degraded coastal swamp. American Meteorological Society, 10-14 January, New Orleans, LA.

CONNER, W.H., T.M. Williams, B. Song, and X. Liu. 2016. Transition of a freshwater forested wetland to marsh - Strawberry Swamp study. Second Hobcaw Research Symposium, 12 February, Georgetown, SC.

ALLEN, S.T., A. McCombs, A. Hiscox, R.F. Keim, K.W. Krauss, W.H. Conner, and J.A. Duberstein. 2016. Strawberry Swamp: deviations from expected evapotranspiration. Second Hobcaw Research Symposium, 12 February, Georgetown, SC.

MCCOMBS, A.G., S.T. Allen, A.L. Hiscox, K.W. Krauss, J.A. Duberstein, and W.H. Conner. 2016. Atmospheric carbon flux drivers in a degraded coastal swamp. Second Hobcaw Research Symposium, 12 February, Georgetown, SC.

MILLER, D., W.H. Conner, D.O. Suhre, and A.T. Chow. 2016. Transitions from freshwater forested wetland to salt marsh – impacts of sea level rise. Second Hobcaw Research Symposium, 12 February, Georgetown, SC.

SUHRE, D.O., W.H. Conner, and A.T. Chow. 2016. Use of citizen scientists in sea level rise research. Second Hobcaw Research Symposium, 12 February, Georgetown, SC.

CONNER, W.H. 2016. The transition of freshwater forested wetlands to marsh in coastal South Carolina as a result of sea level rise and the implications for other areas in the Southeastern USA. South Carolina Native Plant Society, 16 February, Charleston, SC.

CONNER, W.H., C.L. Stagg, N. Cormier, and K.W. Krauss. 2016. Changes in coastal forest dynamics as a result of rising sea level. Southeastern Estuarine Research Society Annual Meeting, 10-12 March, Bluffton, SC.

CONNER, W.H., B. Song, and T.M. Williams. 2016. Coastal forest dynamics under changing environmental conditions. Society of Wetland Scientists, 30 May-4 June, Corpus Christi, TX.

ALLEN, S.T. and W.H. Conner. 2016. Controls over evapotranspiration in a forested wetland. CUAHSI Biennial Symposium, 24-27 July, Shepherdstown, WV (poster).

ALLEN, S.T., A.G. McCombs, A.L. Hiscox, K.W. Krauss, J.A. Duberstein, W.H. Conner, and R.F. Keim. 2016. Resolving spatial and temporal scale mismatches among hydrologic flux datasets across a heterogeneous site. CUAHSI Biennial Symposium, 24-27 July, Shepherdstown, WV (poster).

KIMBROUGH, E., K. Tran, K.W. Krauss, W.H. Conner, and S.A. Van Bael. 2016. Microbial communities of baldcypress roots along salinity gradients in the Southeastern United States. Ecological Society of America, 7-12 August, Ft. Lauderdale, FL.

CONNER, W.H., C.L. Stagg, N. Cormier, and K.W. Krauss. 2016. Coastal forested wetlands in the face of sea-level rise – here today and gone tomorrow? Ecological Society of America, 7-12 August, Ft. Lauderdale, FL.

Conner, W.H., K.W. KRAUSS, and N. Cormier. 2016. Long-term variation of cypress productivity in tidal and non-tidal wetlands. Invited presentation at INTECOL 10th International Wetlands Conference, 19-24 September, Changsha China.

Stagg, C.L., K.W. Krauss, D. Schoolmaster, W.H. Conner, N. CORMIER. 2016. Causal mechanisms of organic matter decomposition in tidal freshwater forests impacted by sea-level rise. Invited presentation at INTECOL 10th International Wetlands Conference, 19-24 September, Changsha China.

CONNER, W.H., K.W. Krauss, N. Cormier, and C.L. Stagg. 2016. Tidal freshwater wetlands: their future in the face of rising sea levels. North Coast Resilience Summit, 28 September, Georgetown, SC.

ROBINSON, H., A. Acoasta, D. Miller, A.M. Ruecker, W.H. Conner, and A.T. Chow. 2016. Effects of sea level rise on carbon and nitrogen turnover in coastal forested wetlands of South Carolina. ACS Southeast Regional Meeting, 23-26 October, Columbia, SC.

Xijun Liu, W.H. CONNER, B. Song, and A.D. Jayakaran. 2017. Forest composition and growth in a freshwater forested wetland community across a salinity gradient in South Carolina, USA. Society of Wetland Scientists, 5-8 June, San Juan, Puerto Rico.

CHOW, A.T., A.M. Ruecker, D.O. Suhre, D. Miller, W.H. Conner, H. Chen, Y. Liu, L.-J. Kuo, and N. Tolic. 2017. Dissolved organic matter and nutrient dynamics in forest-marsh transition zones – implications of sea level rise on coastal ecosystems in southeastern US. Soil Science Society of America, 22-25 October, Tampa, FL. Invited talk.

CONNER, W.H. 2017. Freshwater forest transition to marsh and its implications for wildlife. South Carolina Chapter of The Wildlife Society. 4 October, Columbia, SC. Invited talk.

GODFREY, S.T., R.F. Baldwin, J.A. Duberstein, W.H. Conner, W.C. Bridges, and J.H. Waddle. 2017. Improving our understanding of reptiles and amphibians in southern Atlantic tidal swamps. South Carolina Chapter of The Wildlife Society. 4 October, Columbia, SC.

CONNER, W.H. 2017. Bottomland/swamp forest restoration and artificial regeneration. Bottomland and Swamp Forests Symposium. 31 October – 2 November, Wilmington, NC. Invited talk.



KRAUSS, K.W., G.B. Noe, J.A. Duberstein, W.H. Conner, C.L. Stagg, M.C. Jones, C.J. Bernhardt, and N. Cormier. 2017. Changes in standing stocks and fluxes of carbon due to salinization: tidal freshwater wetland forest retreat to marsh. AGU Fall Meeting, 11-15 December, New Orleans, LA. Invited talk.

### **Papers in Press**

### **Papers Submitted**

Krauss, K.W., G.B. Noe, J.A. Duberstein, W.H. Conner, C.L. Stagg, N. Cormier, M.C. Jones, C.J. Bernhardt, B.G. Lockaby, A.S. From, T.W. Doyle, R. Day, S.H. Ensign, K.N. Pierfelice, C.R. Hupp, A.T. Chow, and J.L. Whitbeck. The role of the upper estuary in wetland blue carbon storage: standing stocks, fluxes, and drivers of landscape change. *Ecological Monographs*. Submitted 17 October 2017. Rejected. In revision.

Amatya, D., T. Williams, W.H. Conner, H. Wang, S. Panda, G. Xu, J. Dong, C. Trettin, M. Ho, N. Flanagan, C. Richardson, C. Dong, X. Gao, H. Shi, K. Yu. Tidal freshwater forested wetlands (TFFW): Challenges and opportunities in the context of environmental changes. In: S. An and J. Verhoven, eds. *Wetlands: functions, restoration and wise use*. Springer. Submitted 1 January 2017.

Allen, S.T. and W.H. Conner. Canopy interception in a mesohaline forest-shrub swamp augments freshwater inputs to hummocks. *Wetlands*. Submitted 3 December 2016.

### **Papers in Preparation**

Stanturf, J.A., E.S. Gardiner, W.H. Conner, and B.G. Lockaby. Restoring hydrological functioning in southern forested wetlands. In: M. Lang, S.-M. Stedman, and D. Amatya, eds. *Silviculture in Forested Wetlands of the U.S. Southeast and Gulf Coastal Plain: Wetland Change Drivers, Effects, and Mitigation Strategies*. Wetlands (SI).

Battaglia, L., S. King, and W.H. Conner. Old-growth in southern swamp and bottomland hardwood forests. In: W.S. Keeton and A. Barton, eds. *Ecology and Management of Eastern Old-growth Forests in a Changing World*. Island Press.

Heaton, R. B. Song, and W.H. Conner. Twenty-four year response of South Carolina Coastal Plain forests disturbed by Hurricane Hugo. *Ecological Processes*.

Jayakaran, A.D., J.A. Palazzolo, S. Hutchinson, J.A. Duberstein, and W.H. Conner. Ecohydrologic functioning of an isolated wetland in Coastal SC.

### **SESSIONS CHAIRED, COMMITTEES, POSITIONS IN PROFESSIONAL ORGANIZATIONS**

Chaired session on Plant Ecology at ASB meeting, University of Southwestern Louisiana, Lafayette, Louisiana, April 1983.

Chaired session on Productivity in Natural and Degraded Wetlands at Freshwater Wetlands and Wildlife Symposium, University of Georgia, Savannah River Ecology Laboratory Ninth Symposium, Charleston, South Carolina, 24-27 March 1986.

Field Trip Committee for the Ninth Biennial International Estuarine Research Conference, New Orleans, Louisiana, October 25-30, 1987.

Vice-President, South Central Chapter, Society of Wetland Scientists. 1988-89.

Co-organizer of ESA Annual Fall Field Trip, Hobcaw Barony, October 1990.

Chaired session on Riverine Systems at U.S. Landscape Ecology Symposium, Corvallis, Oregon, April 1992.

Secretary/Treasurer, South Atlantic Chapter, Society of Wetland Scientists, 1992-present.

Chairman, Education Committee, Winyah Chapter of Society of American Foresters, 1992

Vice-chair, Winyah Chapter of Society of American Foresters, 1993

Invited Lecturer at Nanjing Forestry University, China, May 1993

Chair, Winyah Chapter of Society of American Foresters, 1994

Steering Committee of the Consortium for Research on Southern Forest Wetlands, Science Integration Subcommittee, 1994-1997

Program Committee for Workshop on Harvesting Impacts on Southern Bottomland Hardwood Forest Ecosystems, Stoneville, MS, 1994

Registration Committee, Appalachian SAF 75th Annual Meeting, Myrtle Beach, SC, 24-26 January 1996.

Organizing Chairman of Ecology and Management of Southern Forested Wetlands Symposium held 25-27 March 1996, Clemson University.

Associate Editor, Wetlands, 1996-1998.

Chaired session on Plant Ecology at ASB meeting, Greenville, SC, 16-19 April 1997.

Chair of the Consortium for Research on Southern Forested Wetlands, 1997-2000.

Expert Assistance Pool, South Florida Water Management District, 1996-2002.

Peer Review and Edit Committee for Atlantic White-cedar: Ecology and Management Symposium, Christopher Newport University, Newport News, VA, 6-7 August 1997.

TIWET Search Committee, Spring/Summer 1998.

Chair, Wetlands Working Group, Winyah Bay Focus Area Natural Resources Committee, 1999

Board Member, Winyah Chapter, Wildlife Action, Inc. 1999-2001

Department of Forest Resources, Promotion and Tenure Committee, 1999-2002

Department of Forest Resources, Faculty Advisory Committee, 2001-2002

Chair, Landscape Ecologist Search Committee for Department of Forest Resources, Clemson, 2000

Program Committee, 1999-2002, Wetland Restoration: Addressing Asian Issues Through International Collaboration, held September 2002, Nanjing, China

University Research Grant Committee, 2002-2005

Scientific Advisory Board, Winyah Rivers Foundation, 2002-2014

Conference Chair, 2005 Society of Wetland Scientists Meeting, 5-10 June, Charleston, SC.

Organizer and Co-Chair, Symposium on Tidal Freshwater Swamps of the Southeastern United States, SWS meeting, Charleston, SC, 5-10 June 2005

Louisiana Governor's Coastal Wetland Forest Conservation and Use Science Working Group, 2004-2005

Co-Chair, Hydrologist/Stormwater Engineer Search Committee for Baruch Institute of Coastal Ecology and Forest Science, 2005-2006

Organizer and Co-Chair, Symposium on The Effect of Climate and Sea Level Changes on Coastal Wetlands, SWS meeting, Cairns, Australia, 10-16 July 2006

Board Member, Little Leaf Louisiana, 2006-2013

Secretary-General, SWS, 2008-2011

Steering Committee, Integrating Science into the Restoration and Management of Floodplain Ecosystems of the Southeast, Little Rock, AR, 4-6 March 2008

Chaired session on Wetlands at Association of Southeastern Biologists meeting, April 2010

Organizing Committee for Wetlands, Water, and People Conference, 7-8 March 2011, Reston, VA. Also, Student Judging Committee and moderator of The Role of Wetland Vegetation session

Future Meetings Committee, SWS, Chair, 2013-2016

Search Committee, Wildlife Research Leader BICEFS 2014-2015

Search Committee, Chair, Forest Ecologist, SAFES, 2014-2015

Search Committee, Ecosystem Services, BICEFS, 2015

TPR Committee, Department of Forestry and Environmental Conservation, 2/5/15-8/15/17 (chair 2016-17)

Local Planning Committee, SWS Annual Meeting, San Juan, Puerto Rico, 5-8 June 2017

Silent Auction Committee (chair), SWS Annual Meeting, San Juan, Puerto Rico, 5-8 June 2017

## **GRANTS AWARDED**

Associate Investigator. September 1, 1978 thru February 28, 1982. Sea Grant Program, LSU. Effects of current management practices on the primary productivity of the Barataria Basin. \$128,588.

Principal Investigator. September 1, 1982 thru August 31, 1983. Sea Grant Program, LSU. The effect of logging on the growth and survival of cypress in Louisiana. \$11,650.

Co-principal Investigator. October 1, 1983 thru September 30, 1984. Louisiana Board of Regents. The impacts of increased flooding on commercial wetland forests in the Lake Verret watershed. \$31,875.

Associate Investigator. September 1, 1983 thru September 30, 1985. Sea Grant Program, LSU. Atchafalaya Subprogram Management. \$57,588.

Associate Investigator. June 1, 1984 thru September 30, 1984. Jean Lafitte National Historic Park. A study of the effects on the Barataria unit, Jean Lafitte National Historic Park, of the illegal canals and levees of the Bayou des Familles Corp. within the Park Protection Zone. \$1,700.

Associate Investigator. November 14, 1983 thru November 13, 1984. Louisiana Department of Transportation and Development, Office of Public Works. Analysis of the use of natural and artificial wetlands for pretreating Mississippi River water. \$50,128.

Co-principal Investigator. October 1, 1984 thru September 30, 1985. Louisiana Board of Regents. Factors controlling the growth and vigor of commercial wetland forests subject to increased flooding in the Lake Verret watershed. \$23,952.

Associate Investigator. October 1, 1984 thru September 30, 1985. St. Charles Parish

Coastal Commission thru Department of Natural Resources. Wetland management plan for the LaBranche wetlands, St. Charles Parish, Louisiana. \$31,169.

Principal Investigator. February 1, 1985 thru July 31, 1985. Sea Grant Program, LSU. Impoundment mapping study. \$8,436.

Principal Investigator. October 1, 1985 thru November 30, 1986. Sea Grant Program, LSU. Cypress regeneration in Louisiana swamp forests. \$5,844.

Co-principal Investigator. September 1, 1986 thru December 31, 1989. Donations to LSU Foundation. Pilot project looking at feasibility of marsh reclamation in St. Charles Parish. \$81,000.

Co-principal Investigator. October 1, 1986 thru September 30, 1986. Comparison of Louisiana and South Carolina swamp processes. Savannah River Ecology Laboratory. \$18,000.

Associate Investigator. November 1, 1986 thru October 31, 1987. Sea Grant Program, LSU. Atchafalaya Subprogram Management. \$11,337.

Associate Investigator. November 1, 1987 thru October 31, 1988. Sea Grant Program, LSU. Atchafalaya System Analysis. \$12,565.

Co-principal Investigator. October 1, 1987 thru September 30, 1988. Comparison of Louisiana and South Carolina swamp processes. Savannah River Ecology Laboratory. \$13,463.

Co-principal Investigator. August 25, 1988 thru August 31, 1989. The use of swamp forests for treatment of treated municipal wastewater: a baseline study. City of Thibodaux, LA. \$60,000.

Associate Investigator. November 1, 1988 thru October 31, 1989. Sea Grant Program, LSU. Atchafalaya System Analysis. \$12,565.

Co-principal Investigator. May 1, 1989 thru August 31, 1989. Department of Environmental Quality. A use attainability analysis of wetlands for receiving treated municipal and small industry wastewater. \$25,046.

Co-principal Investigator. January 1, 1990 thru December 31, 1990. The use of swamp forests for treatment of treated municipal wastewater: Year 2 of a baseline study. City of Thibodaux, LA. \$20,000.

Principal Investigator. January 1, 1990 thru December 31, 1990. The use of swamp forests for treatment of treated municipal wastewater. Louisiana State University. \$2,971.

Principal Investigator. July 1, 1990-June 30, 1995. Productivity of forested wetlands in South Carolina. State funds, Clemson University. \$17,980.

Principal Investigator. July 1, 1990-June 30, 1995. Regeneration of baldcypress on

Hobcaw following Hurricane Hugo. McIntire-Stennis, Clemson University. \$21,000.

Principal Investigator. Nov. 29, 1990-May 1, 1993. Wetland Forest System Recovery from Hurricane Hugo's Saltwater Tidal Surge. USDA Forest Service, Southeastern Forest Experiment Station. \$60,000.

Co-principal Investigator. 1990-1992. Continuation of long-term ecological research in North Inlet Estuary. University of South Carolina through the National Science Foundation. \$6,668.

Principal Investigator. October 1, 1991-September 31, 1994. Response of forested wetland species to flooding and salinity. U.S. Fish and Wildlife Service. \$70,001.

Principal Investigator. September 1, 1992-August 31, 1995. Comparison of primary productivity of cypress/tupelo wetlands in South Carolina. U.S. Forest Service. \$48,130.

Principal Investigator. Nov. 30, 1993- May 30, 1996. Evaluate growth and survival of forested wetland species planted in the Pen Branch Delta area of Savannah River Site. U.S. Forest Service. \$30,390.

Principal Investigator. August 1, 1994-July 31, 1998. Spatial variability in decomposition processes within forested floodplains: vegetation community linkages. U.S. Forest Service. \$26,938.

Principal Investigator. August 1, 1994-February 28, 1996. Cooperative Agreement to examine fine root phenology in a floodplain forest. U.S. Forest Service. \$8,000.

Principal Investigator. October 1, 1994-September 30, 1996. Development of indices of biotic/ecosystem integrity for southeastern bottomland hardwood wetland systems. U.S.E.P.A. through LSU. \$44,254.

Principal Investigator. July 1, 1995-June 30, 2000. Regeneration in salt water damaged forested wetlands of South Carolina. McIntire-Stennis, Clemson University. \$29,965.

Principal Investigator. July 1, 1995-June 30, 2005. Influence of hydrology on forested wetland productivity. State funds, Clemson University. \$43,982.

Co-principal Investigator. October 1997-June 2002. Study of the long-term ecology of a drainage system in a coastal pine/cypress forest. McIntire-Stennis, Clemson University.

Principal Investigator. July 1, 2000-June 30, 2005. Factors affecting regeneration of tree species in forested wetland sites of the southern United States. McIntire-Stennis, Clemson University. \$3,300.

Principal Investigator. April 2000-March 2001. Potential of planting to control erosion along the Atlantic Intracoastal Waterway: Georgetown, Horry, and Charleston counties in South Carolina. USACOE, Charleston District. \$9,974.



Co-principal Investigator. July 2000-June 2005. Hog management plan development, impact monitoring, and initial management implementation for Congaree Swamp National Monument (COSW), South Carolina. National Park Service (Congaree Swamp National Monument). \$35,619.

Principal Investigator. October 1, 2000-September 30, 2002. Restoration of forested wetland sites in coastal Georgia: a demonstration of planting techniques. Environmental Protection Agency. \$25,000.

Principal Investigator. April 1, 2001-September 30, 2001. Technical Assistance Research into biotechnical installation and planting for erosion control along Atlantic Intracoastal Waterway, Georgetown, Horry and Charleston Counties, South Carolina. US Army Corps of Engineers, Charleston. \$24,570.

Co-principal Investigator. July 1, 2001-June 30, 2004. Floodplain forests and water quality: influence of ecosystem type and biogeochemistry. McIntire-Stennis, Clemson University.

Principal Investigator. January – December 2002. ICWW resurveys – small grant account. US Army Corps of Engineers, Charleston. \$4,613.

Co-principal Investigator. October 1, 2003-September 30, 2006. Low Country Forest Conservation Project. Doris Duke Foundation, through TNC. \$642,000 (Pat Layton, PI).

Principal Investigator. May 15, 2004 – May 15, 2009. Dieback and Restoration of Coastal Forests of the Southeast under Changing Climate: Interactive Effects of Drought Severity, Hurricanes, Sea-level Rise and Coastal Management. USGS, National Wetlands Research Center, Lafayette, LA. \$215,000.

Principal Investigator. September 14-15, 2004. Management Opportunities in Forested Wetland, Bottomland Hardwood, and Riparian Areas of South Carolina. Workshop funded by SC Forestry Commission, Columbia, SC. \$5,127.

Principal Investigator. July 27, 2004 – September 30, 2005. Restoration of a Saltwater-Killed Freshwater Swamp for Potential Wood Stork Habitat Sponsored by USDI Fish & Wildlife Service. \$8,458.

Co-principal Investigator. March 18, 2005 – October 1, 2005. Hydraulic Modeling of the Santee River Floodplain. Sponsored by SC Public Service Authority (Tom Williams, co-PI). \$420,218.

Principal Investigator. July 1, 2005 - June 30, 2011. Ecology and Management of Forested Wetland Ecosystems of the Southern United States. McIntire-Stennis, Clemson University.

Principal Investigator. November 1, 2006 – June 30, 2008. Conservation, Protection, Restoration, and Utilization of Wetland Forests in Georgia. EPA through Southern Environmental Law Center. \$14,249.

Co-principal Investigator. August 1, 2007 – September 30, 2011. Enhancement of suppressed baldcypress growth on the Roanoke River National Wildlife Refuge, North Carolina. US Department of the Interior. \$58,828 (Pat Jodice, co-PI).

Principal Investigator. December 1, 2008 – November 30, 2011. Forest structure and productivity of Four Holes Swamp near Holcim. National Audubon Society. \$ 40,759.

Principal Investigator. May 15, 2009 – May 15, 2014. Climate change and tidally influenced freshwater forested wetlands of the southeast: understanding functional ecological attributes of forest transitions to marsh. USGS, National Wetlands Research Center, Lafayette, LA. \$215,000.

Principal Investigator. March 9, 2010 to September 30, 2013. Understanding Relationships Between Sediment and Carbon Deposition and Floodplain Forest Functions in the Congaree National Park, SC. USGS, Reston, VA. \$109,995.

Co-principal Investigator. December 4, 2013 to January 31, 2016. Identifying and Evaluating Impacts to Wetlands from the Savannah River Estuary. U.S. Army Corps of Engineers, Vicksburg, MS. \$ 858,284 (Jamie Duberstein, co-PI).

Co-principal Investigator. May 15, 2014 to May 14, 2019. Retreat of Tidally Influenced Freshwater Forested Wetlands in the Southeast: Biogeochemical Investigations and Field Support. USGS, National Wetlands Research Center, Lafayette, LA. \$199,995 (Alex Chow, co-PI).

Co-principal Investigator. September 18, 2014 to September 18, 2017. Ecological Stress in Coastal Ecosystems: Exploring the Influences of Sea Level Rise and Urban Development. Earthwatch. \$47,120 (Alex Chow, co-PI).

Co-principal Investigator. August 2015 to July 2018. Collaborative Research: Halocarbon Biogeochemistry in Coastal Wetland Ecosystems - Exploring the Transition from Forested Wetland to Salt Marsh. National Science Foundation. \$332,654 (Alex Chow, co-PI).

Co-principal Investigator. February 1 2017 to January 31, 2018. RAPID proposal: Impact of storm surge on coastal forest demography in response to repeated hurricane disturbances. \$152,268 (Thomas O'Halloran, Bo Song, Skip J. Van Bloem, co-PIs)

## **GRADUATE STUDENTS**

### **Master of Science, chair**

Evaden Brantley (Funderburke), 1995, M.S. in Forestry

- Thesis title: Growth and survival of four forested wetland species planted on Pen Branch Delta, Savannah River Site, S.C.

- Current Position: Associate Professor and Extension Specialist, Crop, Soil and Environmental Sciences, 238 Funchess Hall, Auburn University, AL 36849, 334-844-3927, brantef@auburn.edu

Steven Busbee, 2001, M.S. in Forestry

- Thesis title: An ecological characterization of three seasonally flooded ponds on the Waccamaw Neck, South Carolina
- Current Position: Senior Environmental Scientist, STV Incorporated, 2430 Mall Dr. Suite 315, North Charleston, SC 29406, 843-957-039, steven.busbee@stvinc.com

Van Whitehead (withdrew after 1 year to attend Law School)

William deGravelles, Dec. 2010, M.S. in Forestry

- Thesis title: Two-year growth and mortality of sub-canopy baldcypress (*Taxodium distichum* [L.] Rich.) released in artificial canopy gaps in a North Carolina swamp
- Current Position:
- Honors/Awards: Recruiting Fellowship 2008; Lorimer Millhaven Fellowship 2008-09, 2009-10
- Current Position: Land Steward / Restoration Ecologist at The Nature Conservancy, Lafayette, LA, william.degravelles@tnc.org, 225-931-7373

#### **Ph. D., chair**

Mehmet Ozalp, 2003, Ph.D. in Forestry

- Dissertation title: Water quality, aboveground productivity, and nutrient dynamics during low flow periods in tidal floodplain forests of South Carolina
- Current Position: Assistant Professor, Department of Watershed Management, Faculty of Forestry, Artvin Coruh University, Turkey

Marceau Ratard, Aug. 2004, Ph.D. in Forestry

- Dissertation title: Factors affecting growth and regeneration of baldcypress in a South Carolina tidal freshwater swamp
- Current Position: Professor, Biology Department, Delgado Community College, New Orleans, LA

Scott Zengel, Dec. 2008, Ph.D. in WFB

- Dissertation title: Wild pig habitat use, substrate disturbance, and understory vegetation at Congaree National Park
- Current Position: Vice President, Director of Environmental Sciences, Research Planning, Inc. (RPI), 247 E. 7th Avenue, Suite 200. Tallahassee, Florida 32303, (850) 212-3155, szengel@researchplanning.com

Jamie Duberstein, Dec. 2011, Ph.D. in Forestry

- Dissertation title: Composition and ecophysiological proficiency of tidal freshwater forested wetlands at different basin, landscape, and microtopographical locations
- Current Position: Research Assistant Professor, Baruch Institute of Coastal Ecology and Forest Science, Georgetown, SC

Stephen Jones (co-chair), Dec. 2011, Ph.D. in WFB

- Thesis title: Spatio-temporal modeling of arthropod-borne zoonotic diseases: a proposed methodology to enhance macro-scale analyses
- Current Position: Biostatistical Research Scientist, BlueCross BlueShield of

Tennessee, Chattanooga, TN

Masamichi Ogasawara, withdrew, Ph.D. in Forestry

- Dissertation title: Spatial analysis of vegetation in South Carolina tidally influenced freshwater forested wetlands
- Current position: failed comprehensive exam and withdrew 5/2012

Gavin Blosser, current, Ph.D. in Forestry

- Dissertation title: Assessment of aboveground net primary productivity and detrital biomass, community structure, and species composition across a terraced floodplain forest of the Congaree River
- Current Position: Grad student and Lead Environmental Inspector for Atlantic Coast Pipeline working for Dominion through a staffing company named Quality Integrated Services
- Honors/awards: Wade Stackhouse Graduate Fellowship for 2012-12 and 2012-213

David Miller (co-chair), current, Ph.D. in Forestry

- Dissertation title:
- Current Position: Grad student

#### **Other Committees Served on**

Irene Hesse, 1994, M.S. in Marine Science, LSU

Elizabeth Saul, 1995, M.S. in Forestry

Kevin Jacobs, 1995, M.S. in Aquaculture, Wildlife and Fisheries

Rick Myers, 1996, Ph.D. in Forestry

Paul Pettigout, 1997, M.S. in Forestry

Justin Hilton, 1997, M.S. in Forestry

Red Baker, 1998, Ph.D. in Forestry, Auburn

Erik Shilling, 2002, Ph.D. in Forestry, Auburn

Daniel Johns, Ph.D. in Forestry, Auburn (resigned after first year)

Jamie Duberstein, 2004, M.S., University of Florida

Stephen Jones, Ph.D. (withdrew from school in December 2005)

Sarah Sundberg, 2006, Ph.D. in Environmental Toxicology

Emily Duerr, 2007, M.S., Forestry

Rachel Jolley, May 2008, Ph.D. in Forestry, Auburn

Brian Williams, Dec. 2008, M.S., Forestry

Evaden Brantly, Dec. 2008, Ph.D. in Forestry, Auburn

Jennifer Mitchell, May 2009, Ph.D. in Forestry, Auburn

Jianing Dai, May 2012, M.S. in Biosystems Engineering

Kathryn Pierfelice, 2013, M.S. in Forestry, Auburn

Matthew Riker, 2014, Ph.D. in Forestry, Auburn

Lauren Behnke, 2014, M.S. in Forestry, Auburn

Christian Reid Heaton, 2016, M.S. in Forestry

Dennis Shure, current, Ph.D. in Wildlife and Fisheries Biology

Sidney Godfrey, current, M.S. in Wildlife and Fisheries Biology

Michael Gouin, ??, M.S. in Wildlife and Fisheries Biology

Lauren Senn, current, Ph.D. in Wildlife and Fisheries Biology

**Other Students**

Todd Avant, spring 1992, Wofford College

Brian Sox, summer 1992, Governor's School of Science and Mathematics

Heather Covington, summer 1993, Governor's School of Science and Mathematics

Jene Bryant, summer 1994, Governor's School of Science and Mathematics

Mary Saunders, summer 1996, Governor's School of Science and Mathematics

Keenan Dunham summer 1998, Governor's School of Science and Mathematics

Gael Legros, summer 1999, Agricultural University, Bordeaux, France

Amber Lee, summer 2000, Low Country School